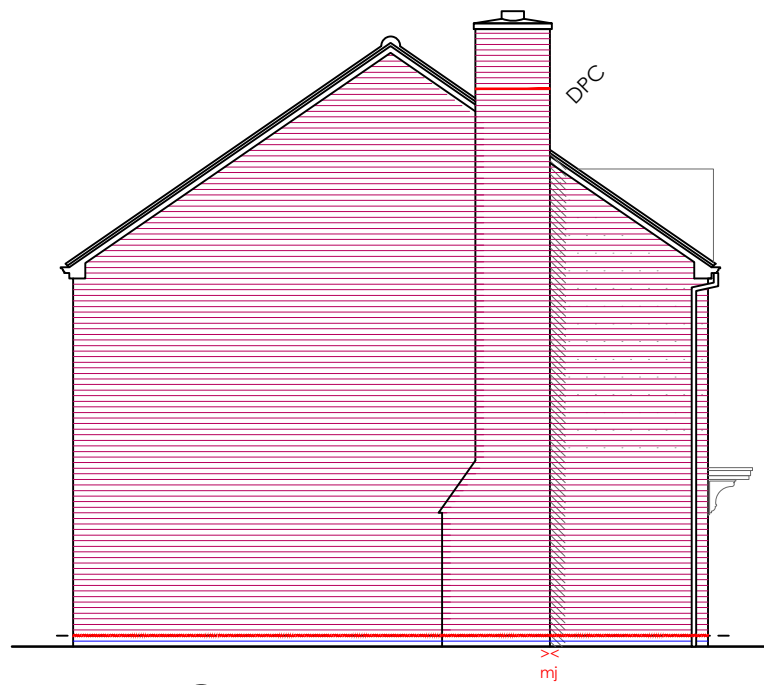
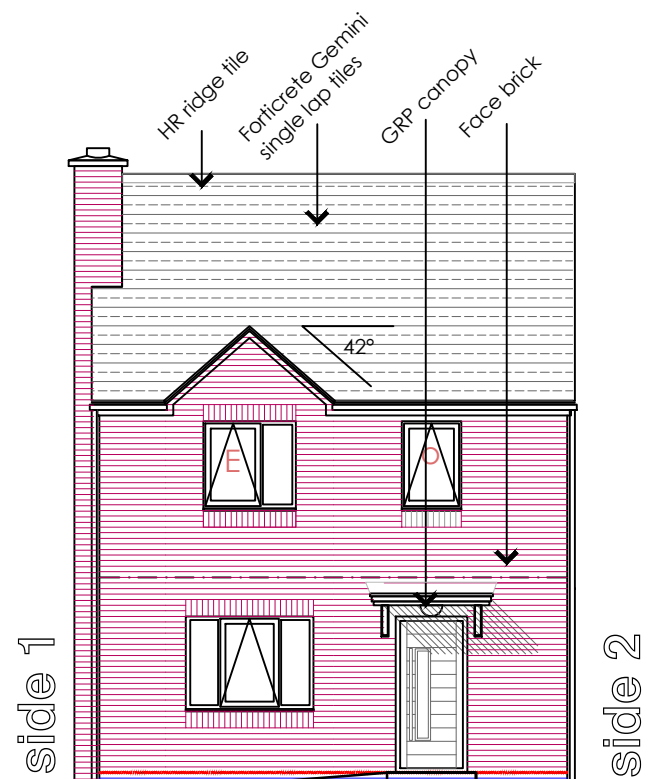


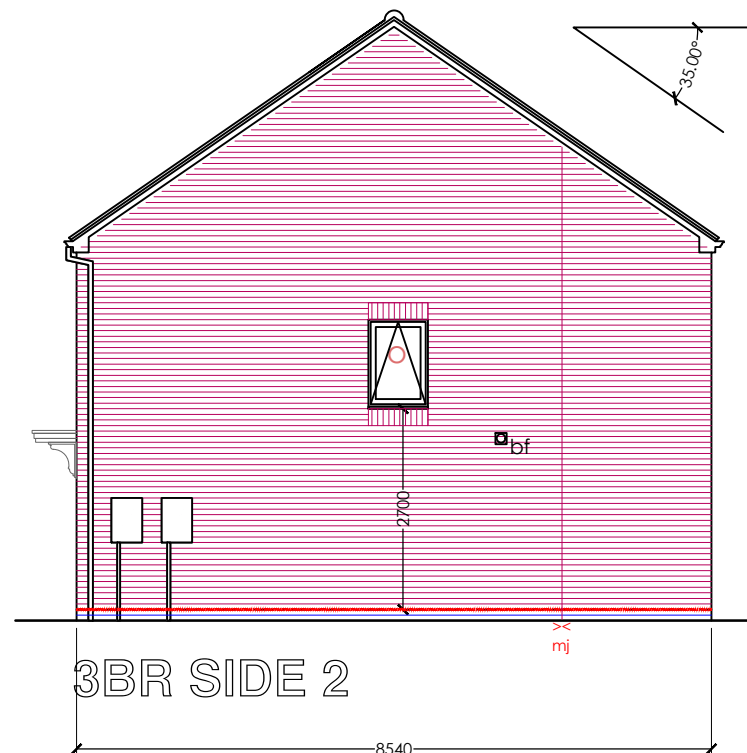
Copyright of this drawing is retained by Masefields Marchant Brabbs Limited, not to be reproduced or copied without written consent.



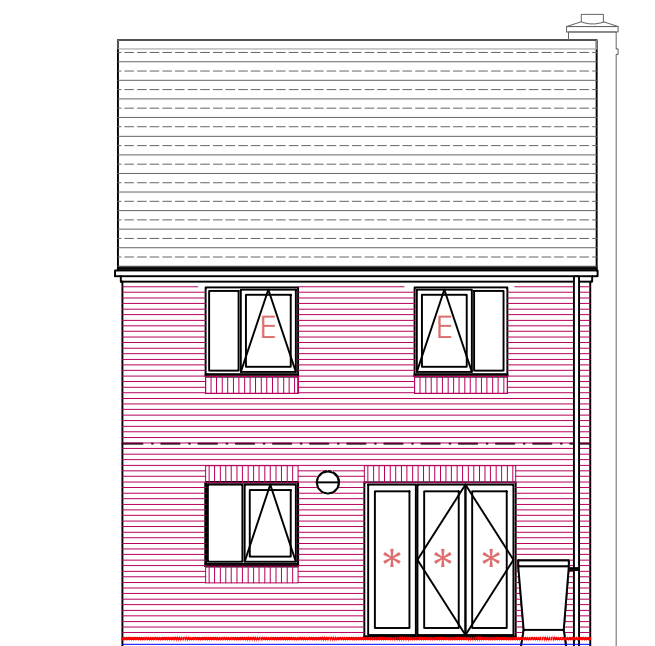
3BR SIDE 1



3BR FRONT -



3BR SIDE 2



3BR REAR

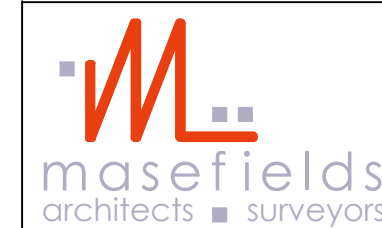
- ⊖ Low Energy bulkhead, 40Lum/W
- E - egress window
- * Safety Glazing complying with BS6206
- - obscured glass
- >mj< - Expansion joint

Rev F:-/mb /14.12.20/ Plot subs 1
 Rev E:-/cn /03.04.19/Chimney position
 Rev D:-/cn /19.04.18/
 Rev C:-/cn /12.02.18/ materials/omit render for brickwork
 Rev B:-/mb/14.12.17/ .key plans
 Rev B:-/mb/09.10.17/ rear gable omitted, fenestration & materials

DRAWING STAGE
 F=Feasibility
 P=Planning stages
 W=Working drawings
 AB=As built



CLIENT:
 WESTPOINT
 Fishing line Rd
 REDDITCH



PROJECT:
 TAN HOUSE FARM
 Studley Rd
 REDDITCH

TITLE:
 ELEVATIONS
 TYPE 3BR

Chartered Architects & Surveyors
 Doric House, Church St.
 Studley Warwickshire B80 7LG
 Tel: 01527 910190 Fax: 01527 857465
 Email: architecture@masefields.co.uk

Drawn mb	Ratio 1 : 1.00@A3	Checked mb	
Date Mar 17	Job No 3210	Drw No 012	Rev F

PLOT 2