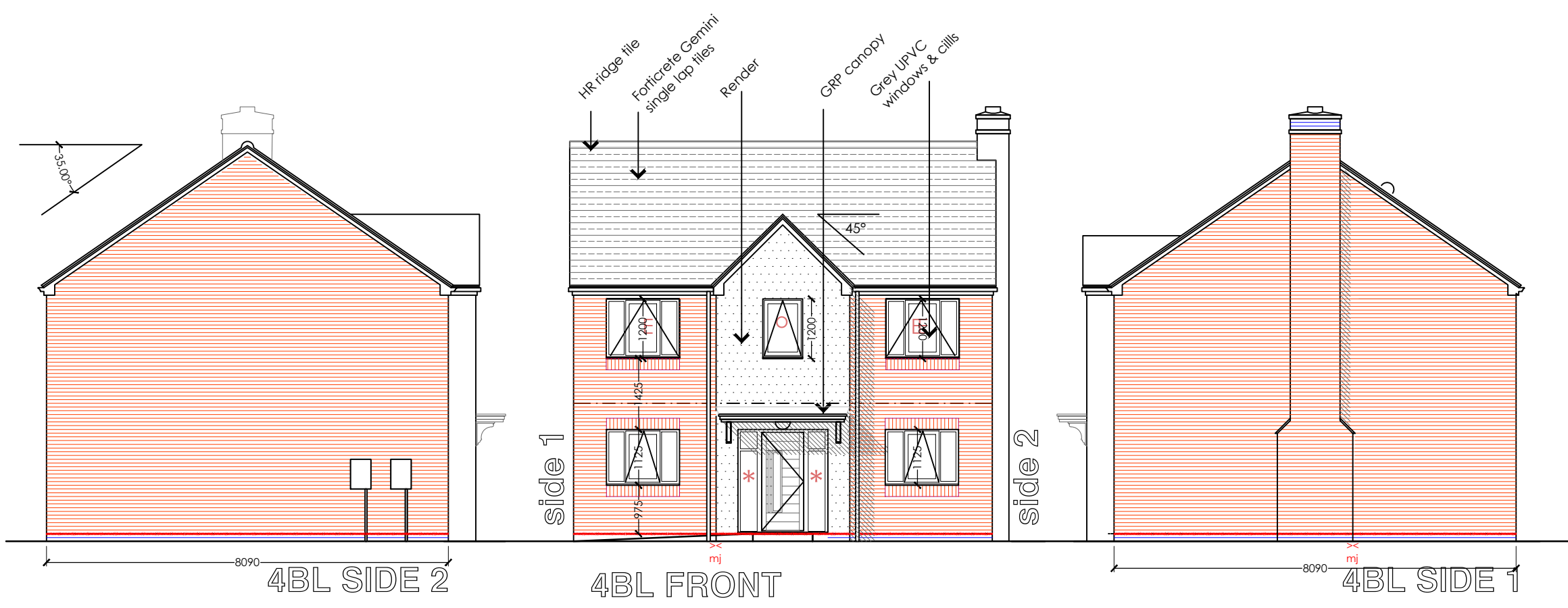
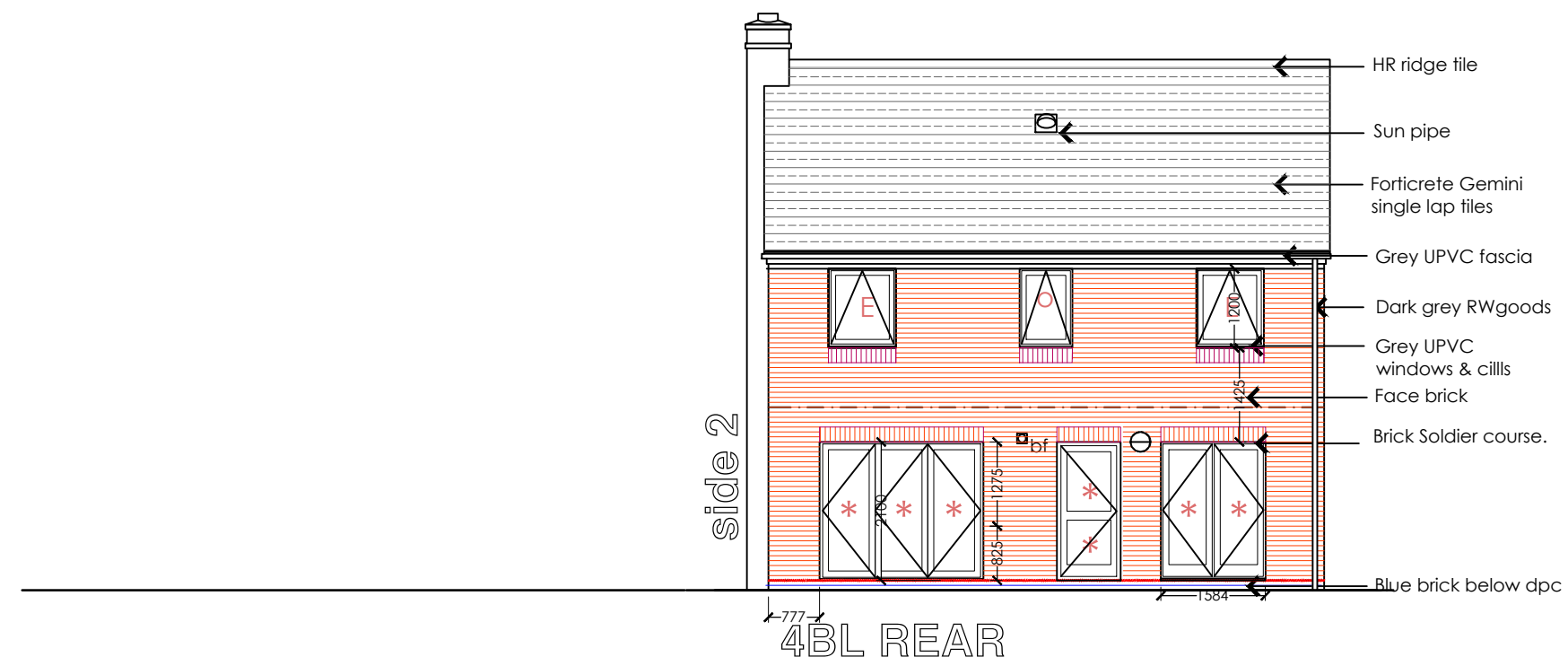


Copyright of this drawing is retained by Masefields Marchant Brabbs Limited, not to be reproduced or copied without written consent.

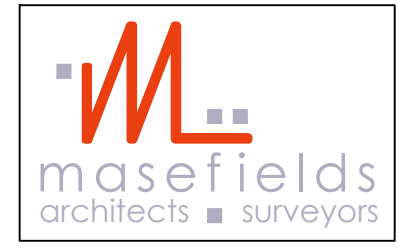


Rev J:-/mb /14.12.20/ Plot subs #1
 Rev H:-/mb/27.02.20 FF front windows as GF
 Rev G:-/mb/22.01.20 rear windows
 Rev F:-/mb/03.04.19 GF windows, & chimney position
 Rev E:-/mb/03.04.19 GF windows, & chimney position
 Rev D:-/cn /19.04.18/
 Rev C:-/cn /12.02.18/materials, omit timber cladding, replaced with brickwork
 Rev B:-/mb/14.12.17/ ,key plans
 Rev A:-/mb/09.10.17/ , fenestration & materials

DRAWING STAGE
 F=Feasibility
 P=Planning stages
 W=Working drawings
 AB=As built

W

CLIENT:
 WESTPOINT
 Fishing line Rd
 REDDITCH



PROJECT:
 TAN HOUSE FARM
 Studley Rd
 REDDITCH

TITLE:
 ELEVATIONS
 TYPE 4BL

Chartered Architects & Surveyors
 Doric House, Church St.
 Studley Warwickshire B80 7LG
 Tel: 01527 910190 Fax: 01527 857465
 Email: architecture@masefields.co.uk

Drawn mb	Ratio 1 : 1 00 @ A3	Checked mb	
Date Mar 17	Job No 3210	Drw No 022	Rev J

Plots 5