

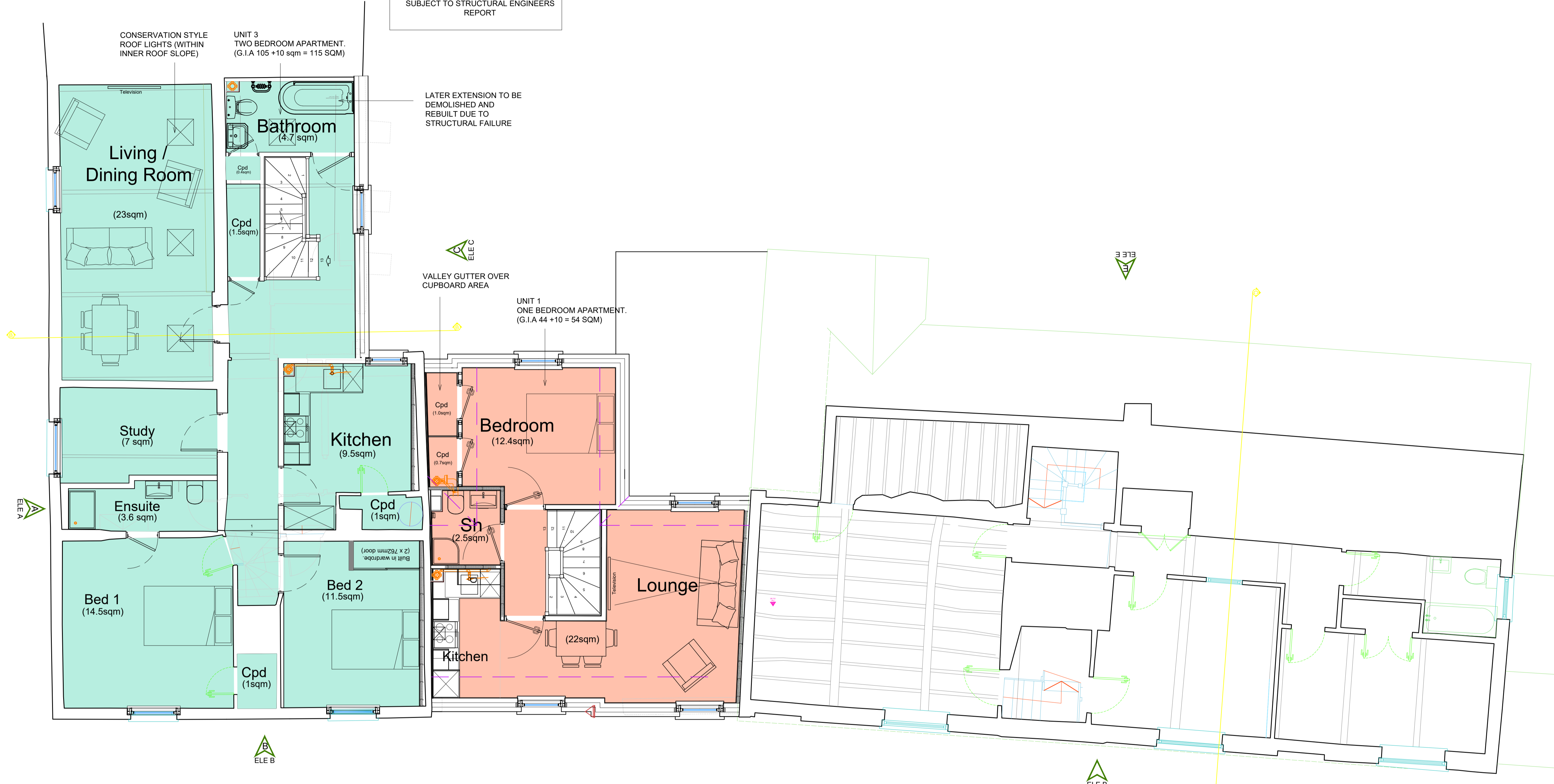


This drawing is copyright and must not be reissued, loaned or copied without the written consent of this practice, all dimensions must be checked on site before proceeding and any discrepancies notified immediately.

All drawings to be read in conjunction with consultant structural engineers, mechanical and electrical consultants, acoustic engineers, energy consultants, etc. design calculation sheets, specifications and drawings plus any accompanying product literature, accredited details, etc.

© Copyright Livemore

RED HOUSE TO BE RETAINED AND SUBSTANTIALLY REBUILT. SUBJECT TO STRUCTURAL ENGINEERS REPORT



PROPOSED FIRST FLOOR PLAN (RED HOUSE)
G.I.A 105 SQM
16860-14
Scale 1:50

PROPOSED FIRST FLOOR PLAN (UNIT 1)
G.I.A 44 SQM
16860-14
Scale 1:50

Rev.	Amendment	Date



Client
GREAT OAKLEY COMMUNITY HUB LTD

Project
**DEVELOPMENT AT THE RED HOUSE
GREAT OAKLEY
ESSEX CO12 5AQ**

Title
PROPOSED FIRST FLOOR PLAN

Drawn by: AKW Date: OCTOBER 2020

Checked by: CH

Scale @ A1: 1:50 Drg. No.: 16860-14(-)

Leigh-on-Sea Office
74-76 Broadway
Leigh-on-Sea
Essex SS9 1AE
leigh.office@livemore.co.uk
01702 714977

London Office
14 Grays Inn Road
London
WC1X 8HN
london.office@livemore.co.uk

