

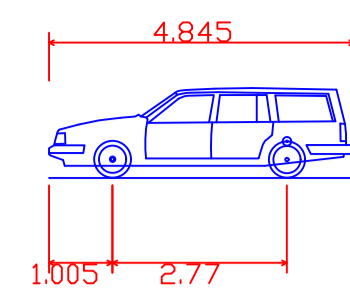
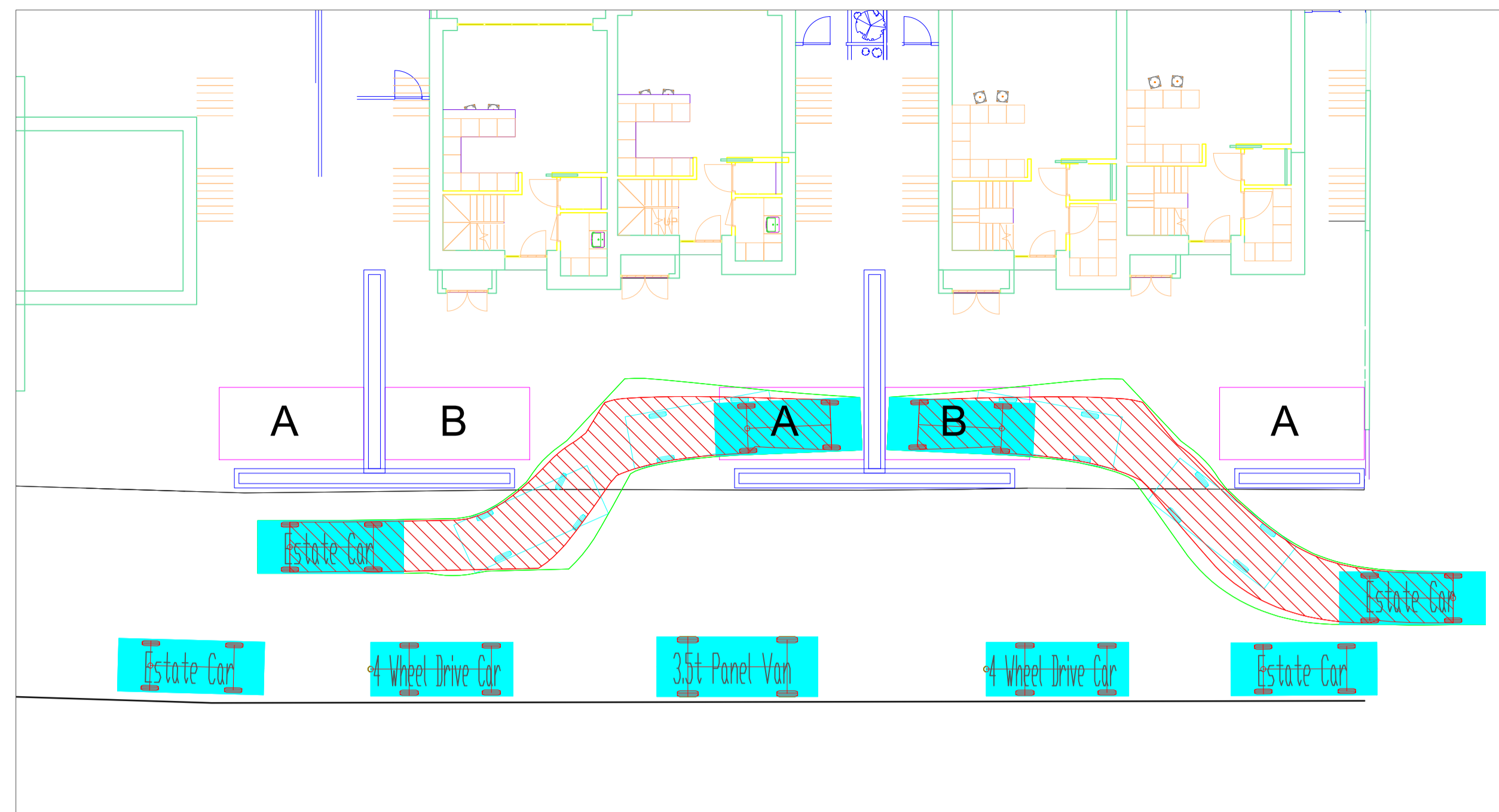
DATE:	19.02.21
JOB NO:	JP.175.19
REV:	--
DRAWN BY:	JG
CHECKED BY:	JP
SCALE:	1:150 @ A1
DRAWING NO:	JG04

NOTES

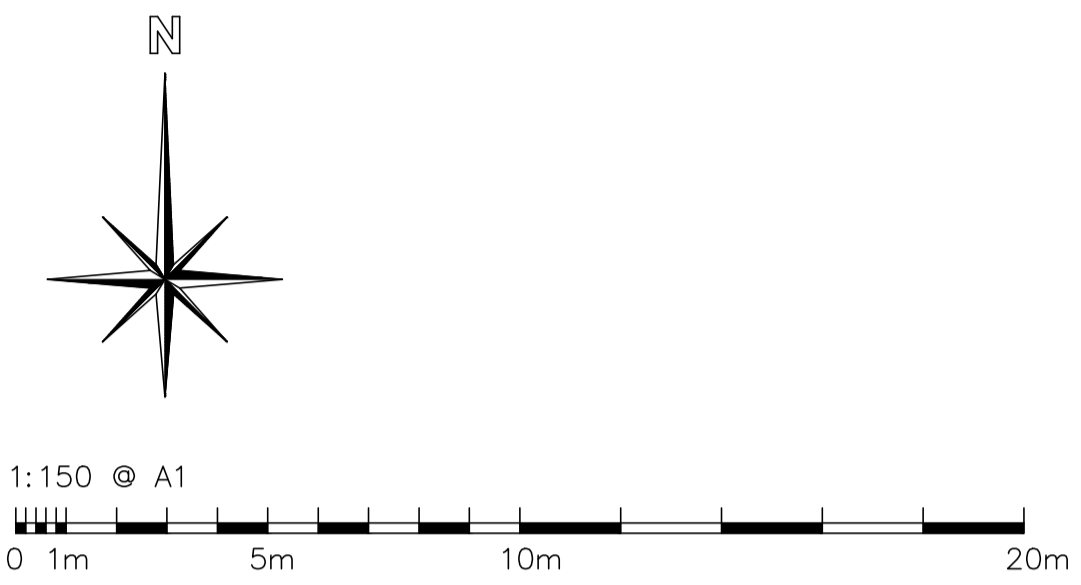
- The contractor shall not scale off the drawing for constructional purposes, only figured dimensions shall be worked from.
- All dimensions and levels to be checked on site by the contractor before commencement of any work and any discrepancies to be reported to the transport & highways consultant.
- The drawings/information used are to be cross referenced where necessary with other relevant consultants information. If in doubt please ask!
- All drawings remain the copyright of Jon Pearson, Transport & Highway Consultant.
- Documents/drawings transferred electronically are not to be altered without prior consent.
- Printed drawings not valid in black and white.

AMENDMENTS

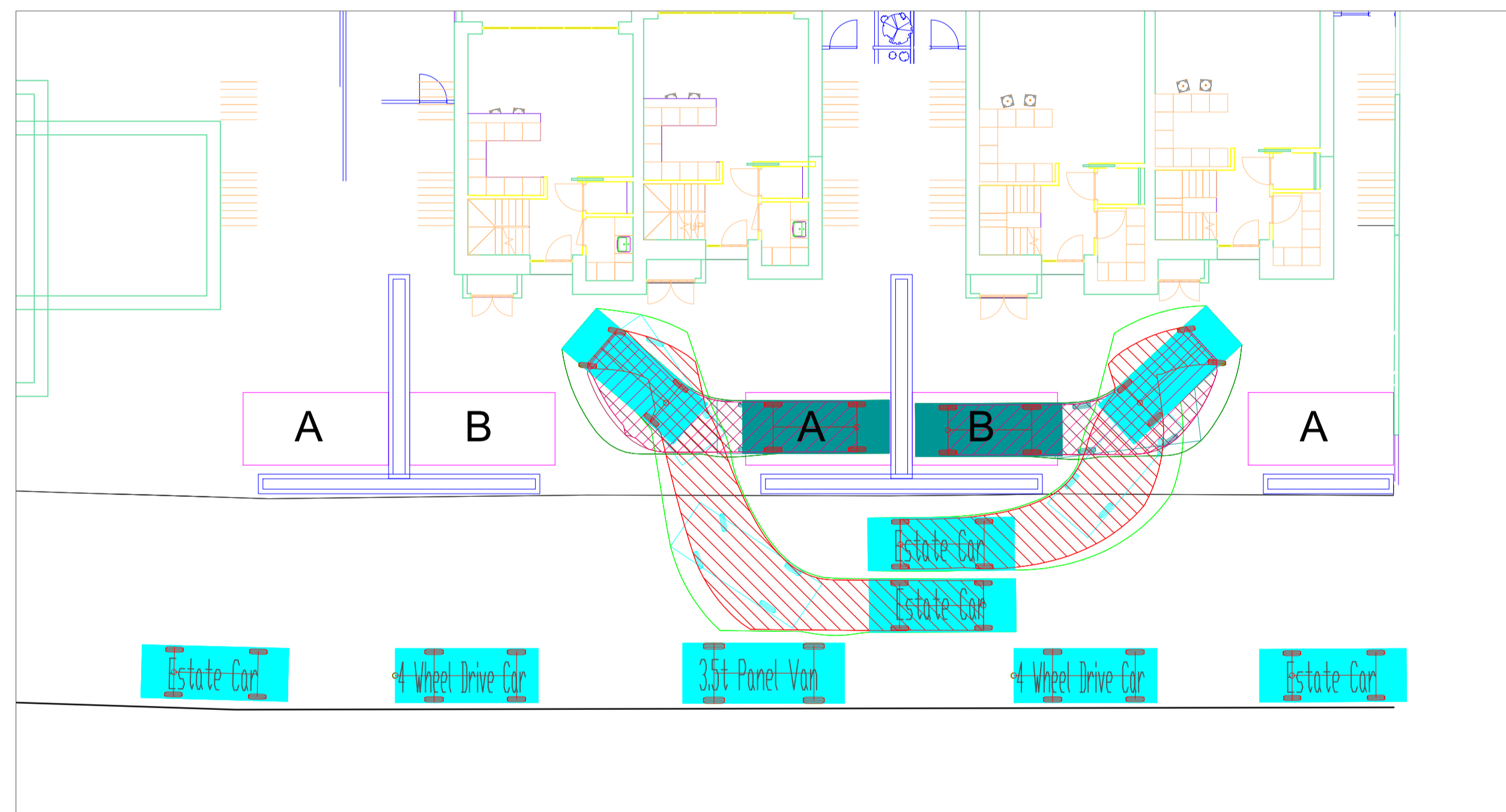
ENTER: APPROACHING FROM WEST PARK TO BAYS A, APPROACHING FROM THE EAST PARK TO BAYS B



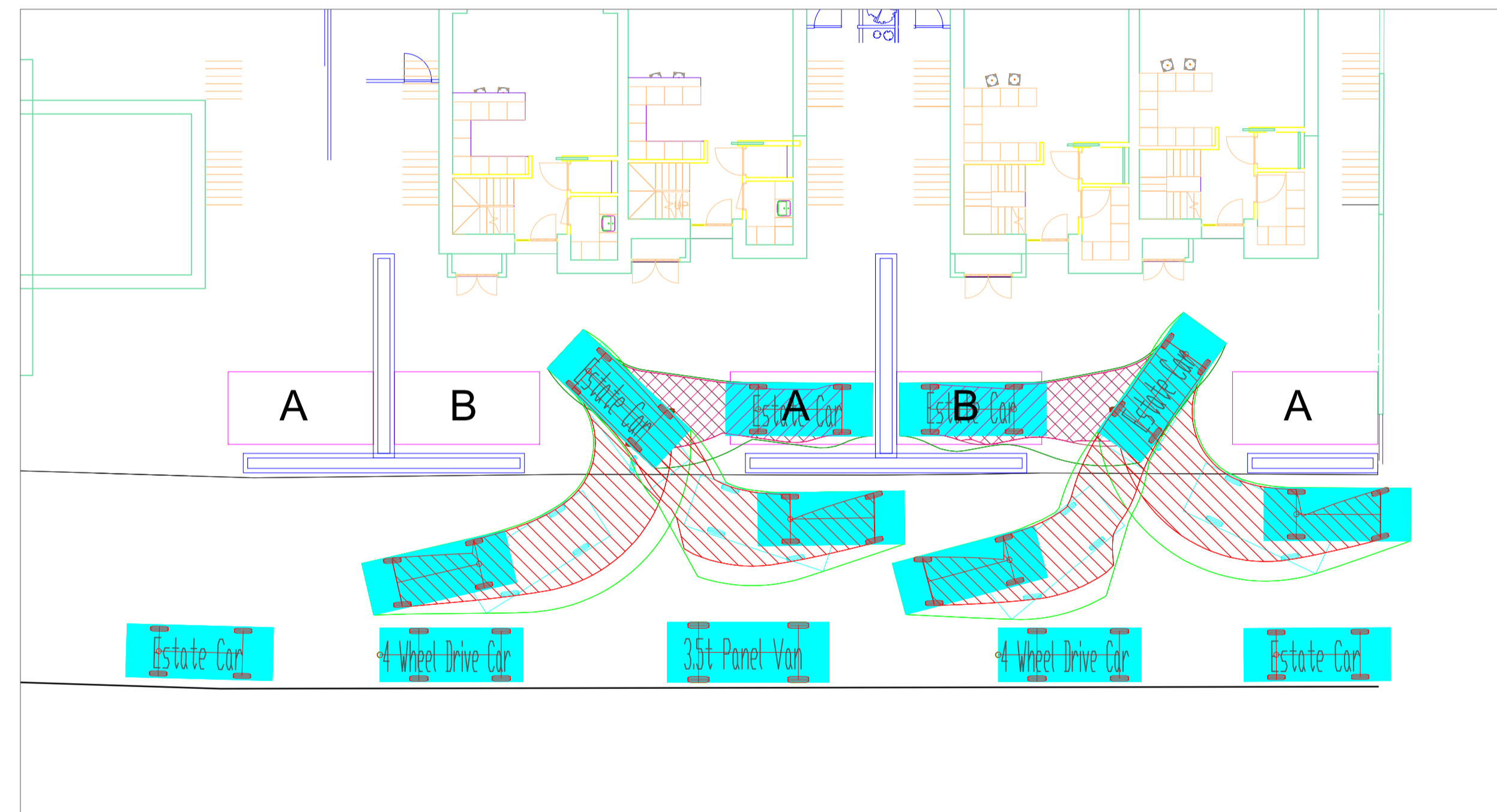
Estate Car
Overall Length 4.845m
Overall Width 1.750m
Overall Body Height 1.424m
Min Body Ground Clearance 0.189m
Max Track Width 1.655m
Lock to lock time 4.00s
Kerb to Kerb Turning Radius 4.950m



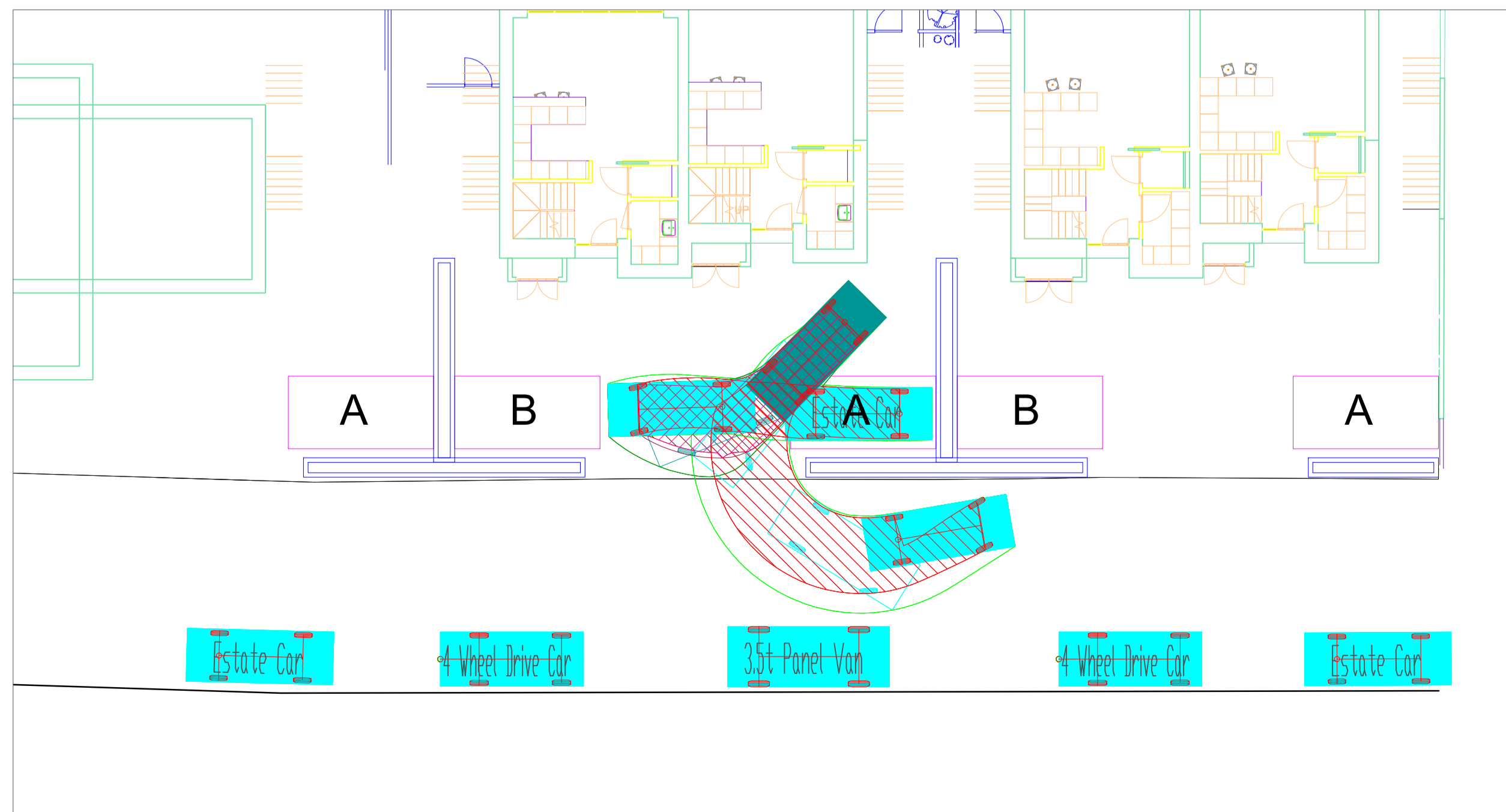
ENTER: APPROACHING FROM WEST PARK TO BAYS B, APPROACHING FROM THE EAST PARK TO BAYS A



EXIT: REVERSE MANOEUVRE FROM BAYS A&B EXIT TO THE EAST AND WEST IN FORWARD GEAR



EXIT: EXIT BAY A IN FORWARD GEAR TO HEAD EAST



EXIT: EXIT BAY B IN FORWARD GEAR TO HEAD WEST

