

**Constructed letters with LEDs, forward-lit, on mounting frame.**

Loose letters in welded aluminium with luminous front in opal acrylic.

Base is milled out in 2mm aluminium plate and wraps are made of aluminium.

Wrap welded base is primed and varnished.

LED is mounted in the base plate.

Fronts are milled out in 8mm opal acrylic.

Front is mounted on the bottom with screws into the side.

Mounted on a milled 3 mm aluminium plate with a smooth backing which is primed and varnished.

**Colours:**

Opal acrylic Lacquer colour White ral 9016 gloss 80

**Position**

The 3 logo sections are to be hung internally and centered over the main door.

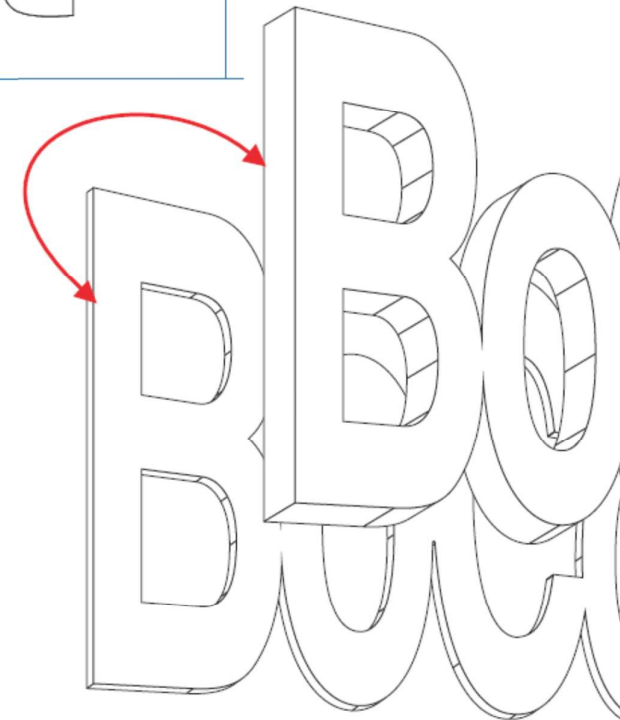
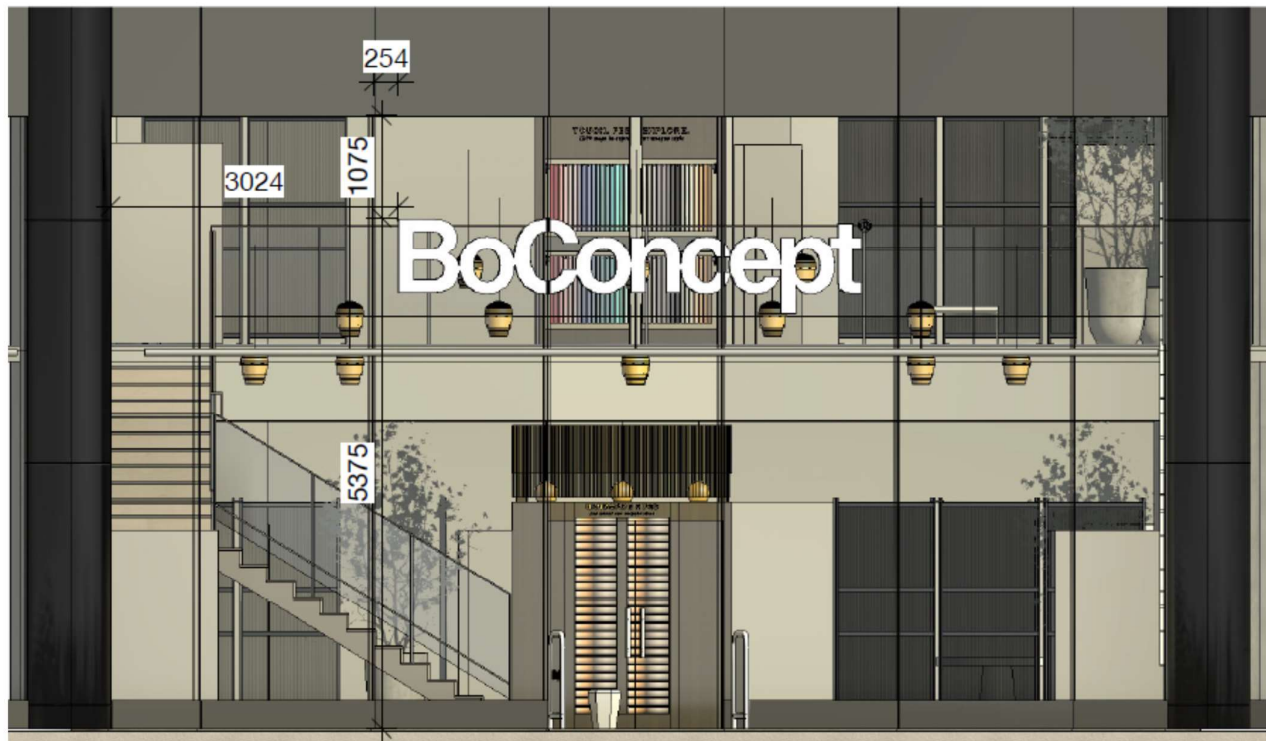
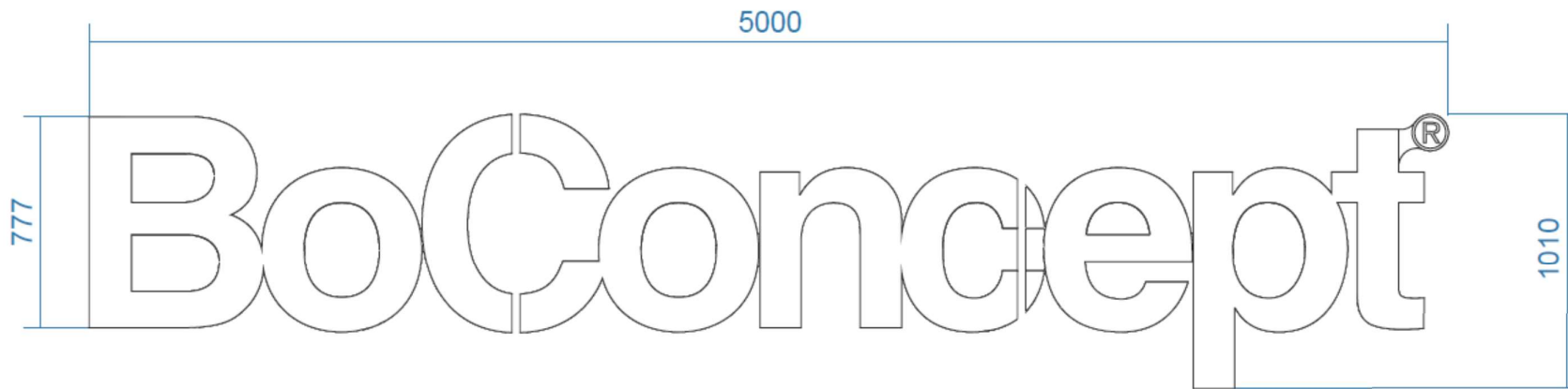


BNSkilte A/S  
Jomfrulekken 6  
DK-8930 Randers

Kirkebjerg Parkvej 30  
DK-2605 Brøndby

T +45 8642 1377  
W bnskilte.dk

Kunde / Leveringsadresse BoConcept Glasgow Skotland	Dato 30.10.20	Kontakt PS	Mål 1:50
	Ordre nr. X		Tegner HS/HPC
	Tegningsid Glasgow 1_1		Format A4
Denne tegning er vor ejendom og må ikke kopieres, overdrages til eller udnyttes af tredje person uden skriftlig samtykke fra BNSkilte A/S.			



Side 2 af 2



**BNSkilte A/S**  
Jomfrulekken 6  
DK-8930 Randers

Kirkebjerg Parkvej 30  
DK-2605 Brøndby

T +45 8642 1377  
W bnskilte.dk

Kunde / Leveringsadresse <b>BoConcept</b> Glasgow Skotland	Dato	30.10.20	Kontakt	PS	Mål	1:25
	Ordre nr.	X			Tegner	HS/HPC
	Tegningsid	Glasgow 1_1			Format	A4

Denne tegning er vor ejendom og må ikke kopieres, overdrages til eller udnyttes af tredje person uden skriftlig samtykke fra BNSkilte A/S.