



Vertical chassis unit
Requires little installation space

FNA-A

The FNA range is designed to be concealed in walls, offering a quiet and efficient air conditioning solution

Installation

The low height of the FNA-A allows it to fit beneath a window. It's narrow depth of 200mm means it requires little installation space if installed within a wall void. This kind of application is perfect for residential applications, with only the discharge and suction grilles visible.

Connectivity

The FNA range is versatile & can be installed in a variety of applications:

- > Individual rooms, when paired with an RXS outdoor unit
- > As part of a multi-room house or apartment, when connected to an MXS outdoor. This application can have up-to 5 rooms, with the indoor units being of different style and capacity
- > Large, or irregular sized rooms run, like offices, when connected as twin, triple or double twin connection with the Sky Air Smart, Classic or Super outdoor unit

INVERTER

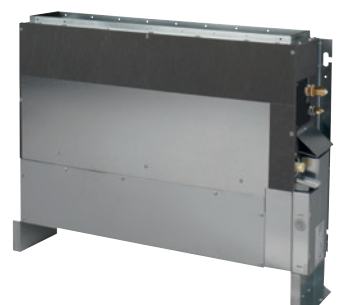
SkyAir



BRC1E53A



RXS25-50



FNA-A



FNA-A

Features	Benefits
Slim casing	Width of only 200mm means the unit requires little space to be installed in wall voids
Low height	Total install height of 720mm allows unit to fit beneath windows in office type applications
Flexible installation	Front or bottom suction is possible, with unit mounted on floor (with factory fitted legs), or wall-hung (removing legs)
Low noise levels	Sound pressure down to 28dba make the FNA the quietest of it's type on the market
Versatile control	7 day timer, through hard-wired remote or an optional wireless remote controller. The FNA can also be connected into Daikin centralised controller as part of a BMS

Indoor Units			Vertical Ducted			
			FNA25A	FNA35A	FNA50A	FNA60A
Capacity	UK Total Cooling	kW	2.54	3.32	4.89	5.86
	UK Sensible Cooling	kW	1.89	2.26	3.66	4.11
	Nominal Cooling	kW	2.4	3.4	5.0	6.0
	Nominal Heating	kW	3.2	4.0	5.8	7.0
Seasonal Efficiency (EN14825) COOLING	Energy Label		A+	A+	A+	A
	Pdesign	kW	2.6	3.4	5.0	6.0
	SEER		5.63	5.65	5.72	5.51
	Annual Energy Consumption	kWh	162	211	306	381
Seasonal Efficiency (EN14825) HEATING	Energy Label		A+	A+	A+	A+
	Pdesign	kW	2.8	2.9	4.0	4.6
	SCOP		4.24	4.05	4.09	4.16
	Annual Energy Consumption	kWh	925	1002	1369	1548
Nominal Efficiency	EER / COP		3.77 / 4.00	3.06 / 3.48	3.35 / 3.34	2.68 / 3.11
Air Flow Rate (Cooling)	High / Nom / Low	m ³ /sec	0.145 / 0.133 / 0.122	0.145 / 0.133 / 0.122	0.267 / 0.247 / 0.225	0.225 / 0.247 / 0.025
External Static Pressure	High / Nominal	Pa	48 / 30		49 / 40	
Dimensions	Height (with legs)	mm	620 (720)		620 (720)	
	Width	mm	750		1150	
	Depth	mm	200		200	
Weight		kg	23		30	
Sound Pressure (Cooling)	High / Nom / Low	dBa	33 / 31 / 28		36 / 33 / 30	
Sound Pressure (Heating)	High / Nom / Low	dBa	33 / 31 / 28		36 / 33 / 30	
Sound Power		dBa	53		56	

Outdoor Units			RXS25L3	RXS35L3	RXS50L	RXS60L
Dimensions	Height x Width x Depth	mm	550 x 765 x 285	550 x 765 x 285	735 x 825 x 300	735 x 825 x 300
Weight		kg	34	34	47	48
Electrical Details	Power Supply		1ph			
	Running Current	A	2.90	4.70	6.30	9.40
	Starting Current	A	3.3	4.3	6.8	10.2
	Max Fuse Size	A	10	10	20	20
Interconnection Wiring	Core / Cable size		3+E / 1.5		3+E / 1.5	
Piping Connections	Liquid / Gas	inches (mm)	1/4 (6.4) / 3/8 (9.5)		1/4 (6.4) / 1/2 (12.7)	
Pipework	Maximum Length	m	20	20	30	30
	Maximum Vertical Rise	m	15	15	20	20
	Precharged to	m	10	10	10	10
	Additional Charge	g/m	20			
	Holding Charge	kg	1.00	1.20	1.70	1.50
Sound Pressure (Cooling)	High / Silent Operation	dBa	46 / 43	48 / 44	48 / 44	49 / 46
Sound Pressure (Heating)	High / Silent Operation	dBa	48 / 45	48 / 45	48 / -	48 / -
Sound Power (Cooling)		dBa	59	61	61	62
Operating Range (Cooling) Min / Max	°CDB		-10 / 46	-10 / 46	-10 / 46	-10 / 46
Operating Range (Heating) Min / Max	°CWB		-15 / 18	-15 / 18	-15 / 18	-15 / 18
Air Flow Rate (Cooling)	High	m ³ /sec	0.558	0.600	0.848	0.836

Accessories

WiFi adapter for online controller (BRP069A81)

The present leaflet is drawn up by way of information only and does not constitute an offer binding upon Daikin UK. Daikin UK has compiled the content of this leaflet to the best of its knowledge. No express or implied warranty is given for the completeness, accuracy, reliability or fitness for particular purpose of its content and the products and services presented therein. Specifications are subject to change without prior notice. Daikin UK explicitly rejects any liability for any direct or indirect damage, in the broadest sense, arising from or related to the use and/or interpretation of this leaflet. All content is copyrighted by Daikin UK.



Daikin Europe N.V. participates in the Eurovent Certification programme for Air conditioners (AC), Liquid Chilling Packages (LCP), Air handling units (AHU) and Fan coil units (FCU). Check ongoing validity of certificate online: www.eurovent-certification.com or using: www.certiflash.com