

© Copyright 2021 Hook Survey Partnership
 The original of these drawings and any copies made from them are the property of Hook Survey Partnership and will remain the property of Hook Survey Partnership. No part of these drawings may be reproduced, stored in a retrieval system, or transmitted in any form or by any means, electronic, mechanical, photocopying, recording, or by any information storage and retrieval system, without the prior written permission of Hook Survey Partnership. Please see our terms and conditions of sale at www.hooksurvey.com for further details.

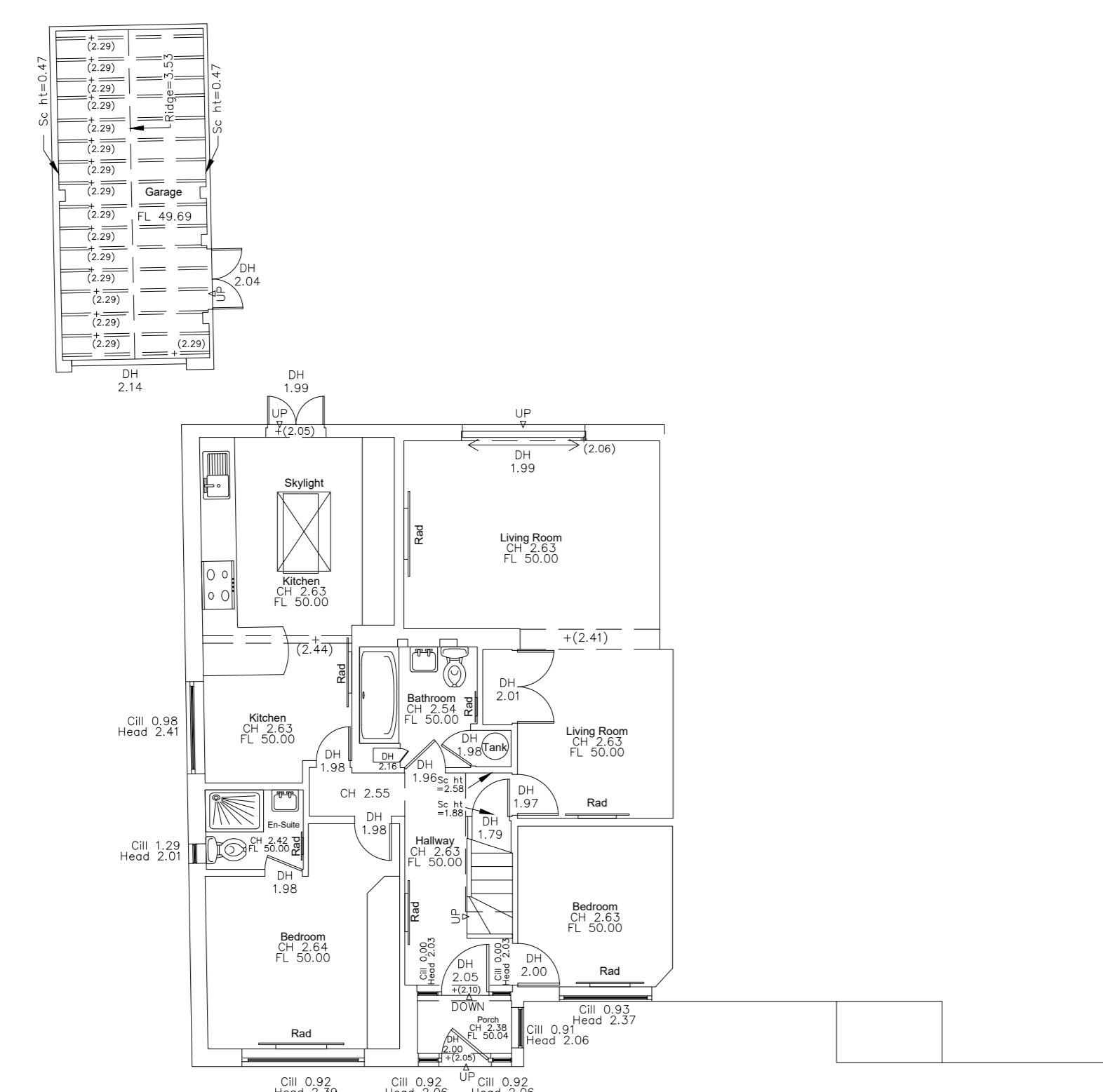
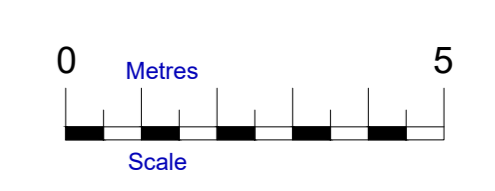
DO NOT SCALE

All critical dimensions must be checked on site prior to commencement of any works.
 This is a CAD drawing - some layers may not be shown on this drawing

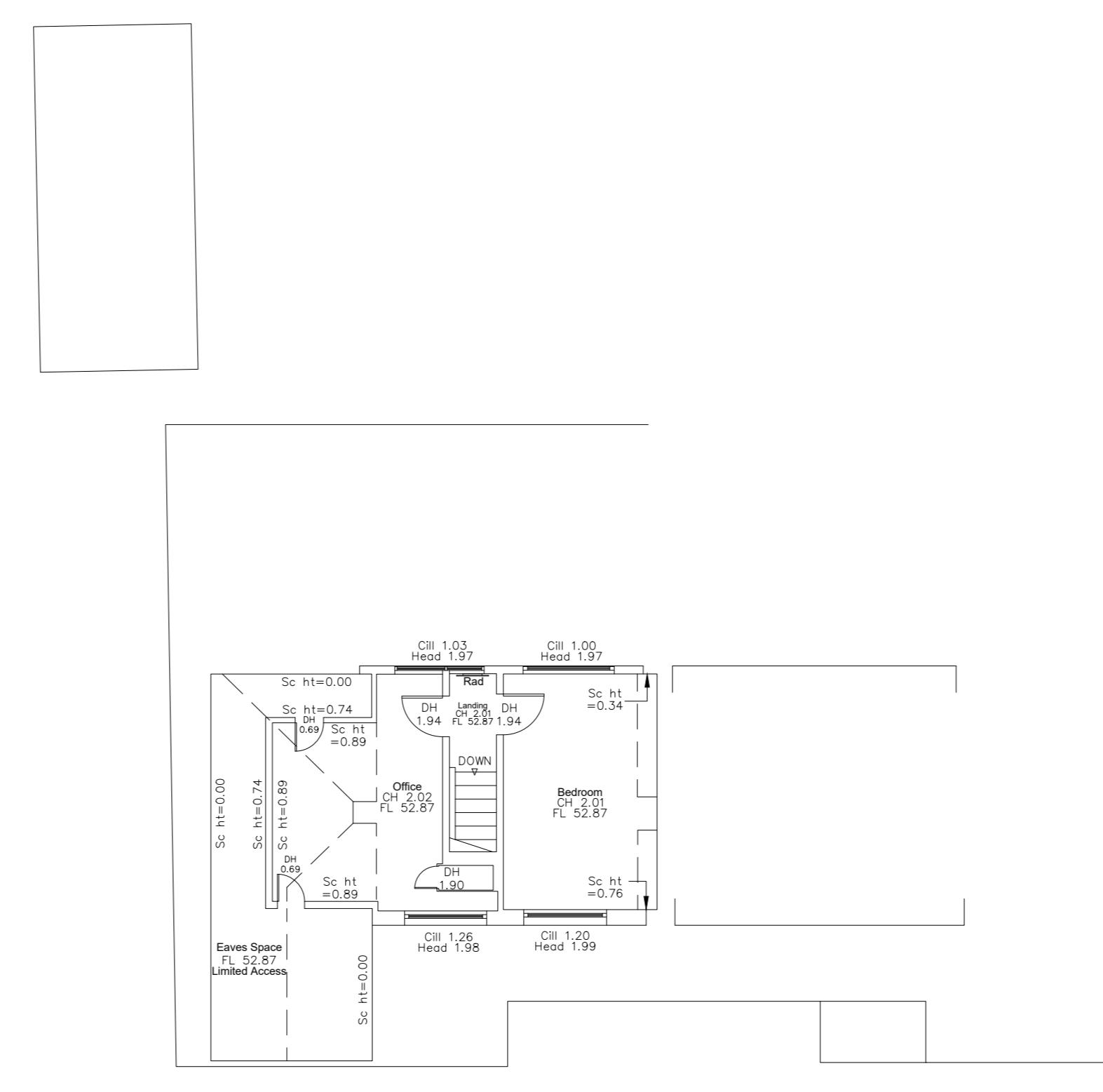
Hook Survey Legend

DL 2.10	Door head height
FL 96.62	Floor level
CH 2.31	Ceiling height (from floor)
FCR 2.55	False Ceiling height (from floor)
WH 1.05	Window cill height (from floor)
WHH 2.00	Window head height (from floor)
SC H+4.05	Height at change in ceiling slope
RAC	Radiator
+0.75	Beam soffit height (from floor)

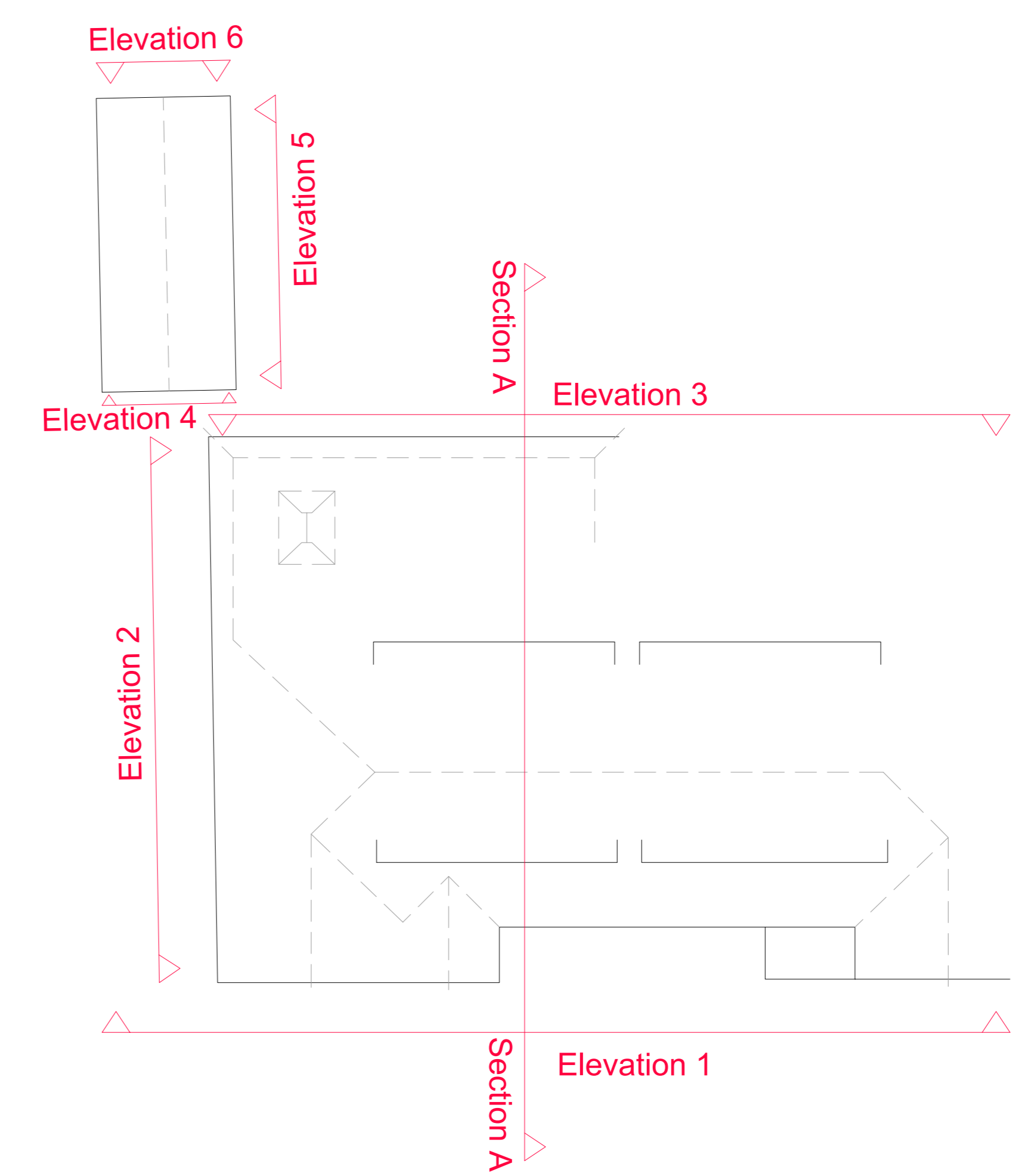
Notes
 Beams and columns surveyed where accessible - some beams and columns may not be shown.
 Elevation details surveyed where accessible
 All measurements have been taken to existing wall, floor and ceiling finishes.



Ground Floor



First Floor



Roof Plan



Elevation 1

Datum 45.000m Datum 45.000m



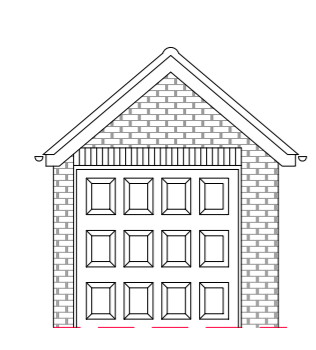
Elevation 2

Datum 45.000m Datum 45.000m



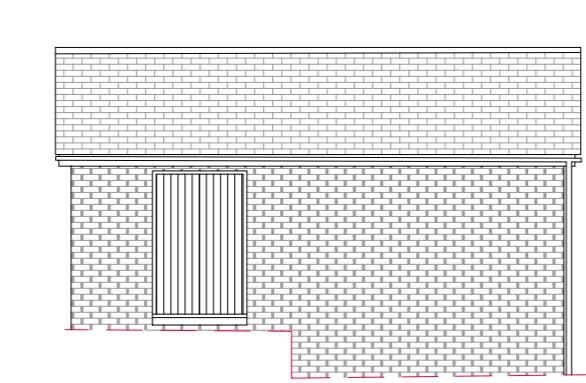
Elevation 3

Datum 45.000m Datum 45.000m



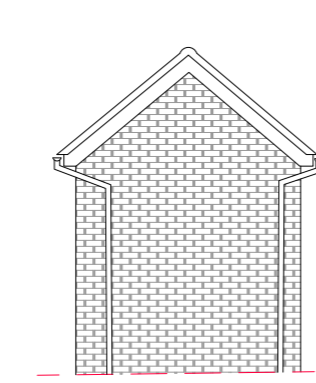
Elevation 4

Datum 45.000m



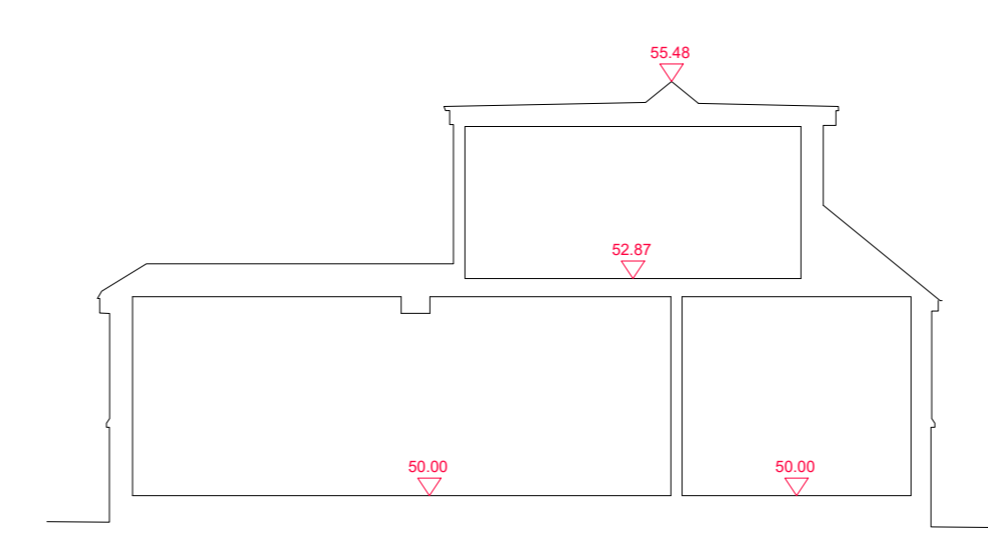
Elevation 5

Datum 45.000m



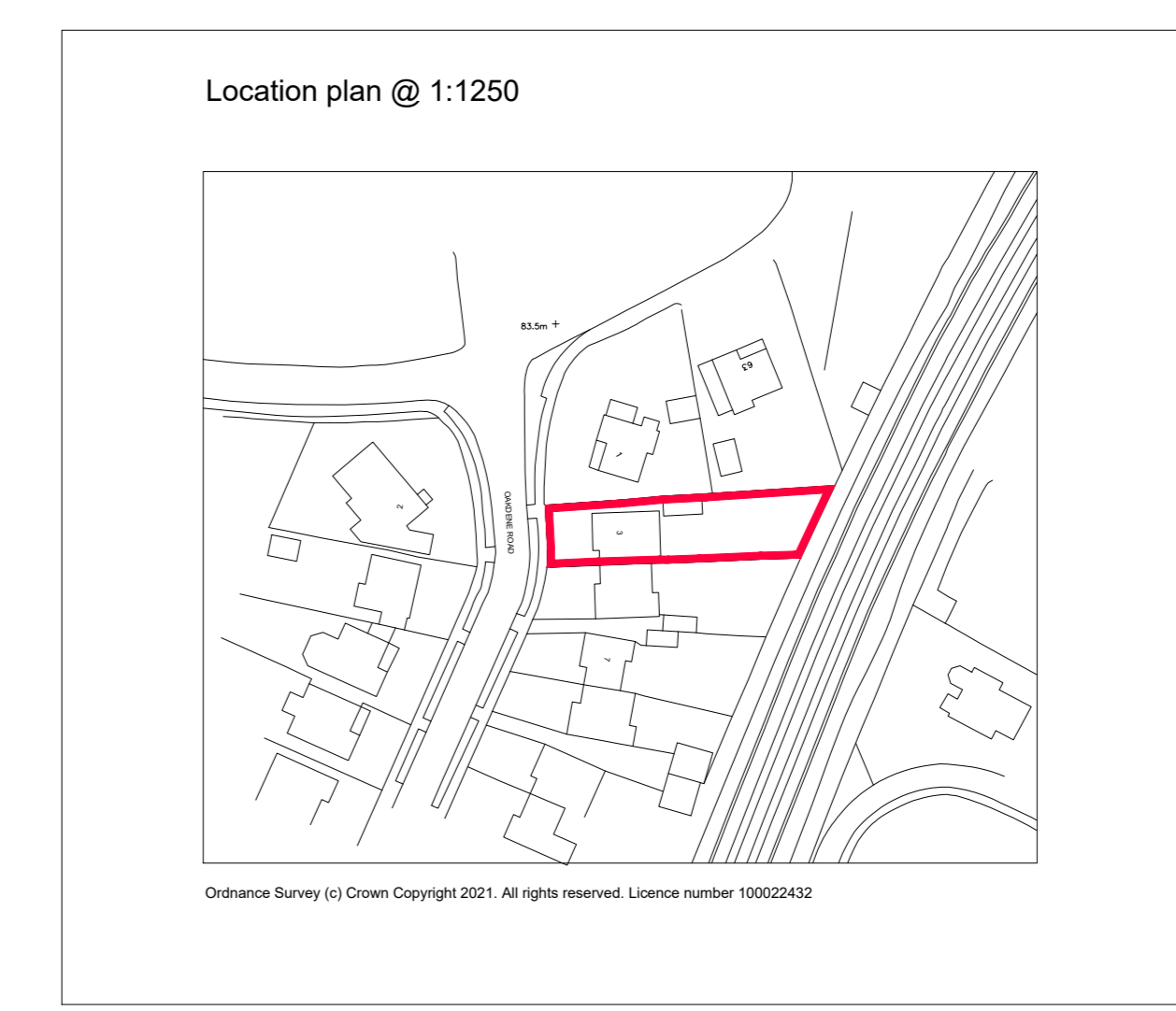
Elevation 6

Datum 45.000m



Section A-A

Datum 45.000m Datum 45.000m



HOOK SURVEY PARTNERSHIP
 Land & Building Surveyors
www.hooksurvey.com

Project: No.3 Oakdene Road, Sevenoaks, Kent TN13 3HH
 Client: Ms Burden

Drawing title: Floor Plans, Elevations & Section

Job No.: S2118289	Dwg No.: S2118289/01	Revision:
Scale: 1:100	Date: July 2021	Drawn by: C.A.M.

Levels related to:
 Levels are arbitrary
 Assumed datum for ground floor level value 50.000m

Head Office
 Unit 1, Blystone Farm
 Orchard Way
 Dartford, Kent
 DA2 7ER
 Email: mail@hooksurvey.com
 Tel: +01322 272221

Midlands Office
 42 Hanson Avenue
 Shipston-on-Stour
 Warwickshire
 CV38 4HS
 Email: midlands@hooksurvey.com
 Tel: +01608 523118

www.hooksurvey.com

