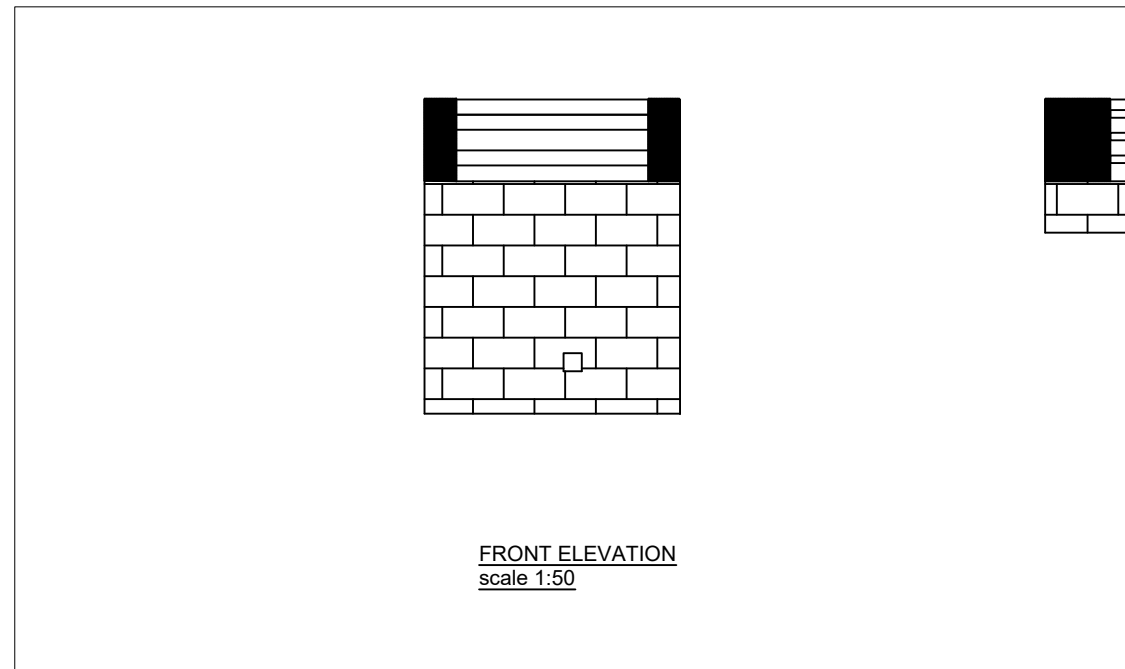
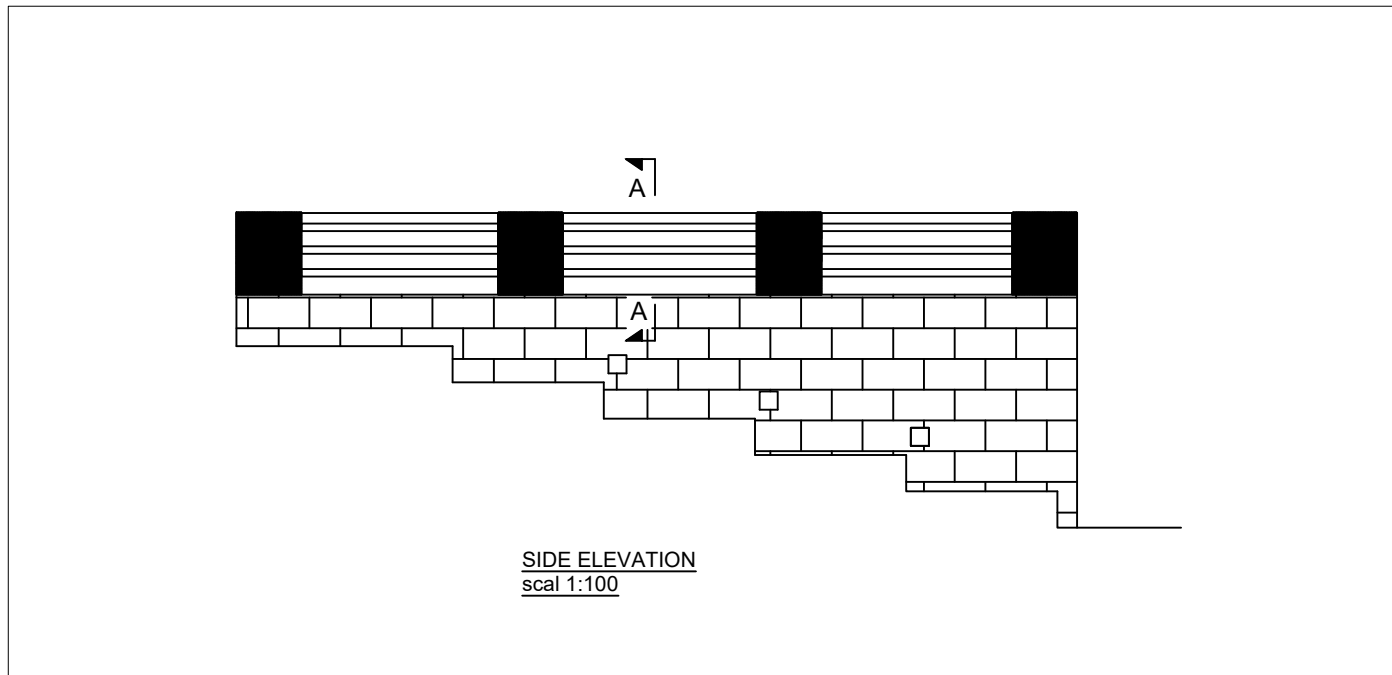


## GENERAL

- 1- All dimensions are in mm
- 2- PCC Planning department had raised an issue with the existing concrete blockwork retaining wall
- 3 - The concrete blockwork retaining wall has no sufficient retaining capacity for any surcharge loadings
- 4 - The restricted parking area must be no less than 2500mm from the face of the wall
- 5 - As a general observation, the masonry retaining wall is in poor condition and maintenance works are required
- 6 - Drop Kerbs to be over 5.850m long



## PROJECT NAME

86 Heol Tawe , Abercrave

Drop Kerbs for parking area - V1

BY Leath

date