

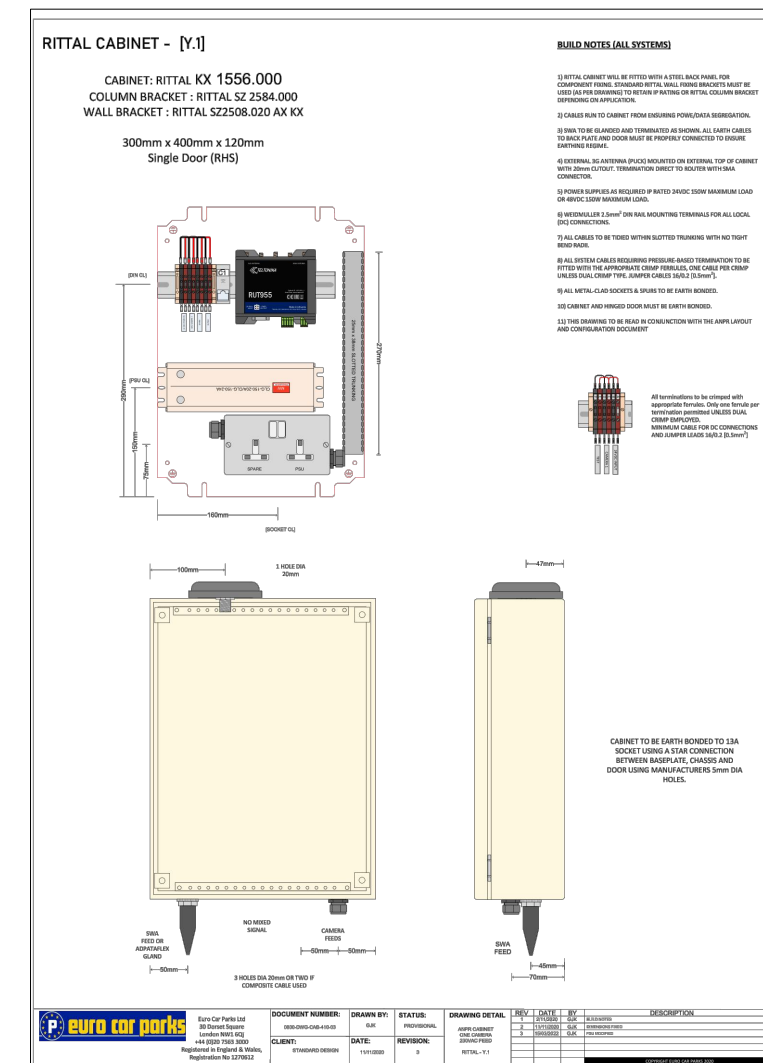
INDICATION OF SURFACE CLIPPED SWA CABLE ROUTE

ANPR CABINET TO DRAW POWER FROM LIGHTING COLUMN, SUBJECT TO SURVEY

CAMERA #2



GOOGLE STREET IMAGE SOUTH ROAD CAR PARK ENTRANCE/EXIT



0800-DWG-CAB-410-03

SOUTH ROAD CAR PARK ENTRANCE/EXIT CAMERA LOCATION

ANPR INSTALLATION NOTES:

SOUTH ROAD CAR PARK ENTRANCE/EXIT

- 1 OFF DUAL LANE ANPR CAMERA
- 1 OFF WALL MOUNTED COLUMN FIXED WITH WP00
- 1 OFF ELECTRICAL/DATA INTERFACE CABINET (SEE DRAWING 0800-DWG-CAB-410-02 FOR DETAIL)

SPECIFIC MAINS POWER DETAIL TO BE CONFIRMED ON INSTALLATION.

ONE OFF DUAL-LANE ANPR CAMERA TO BE FIXED TO TOP OF COLUMN USING SUPPLIED BRACKETS. POWER AND DATA TO BE BROUGHT INTO LOCAL COLUMN TO THE INTERFACE CABINET USING KOPEX REFER TO 0800-DWG-CAB-410-02 FOR CONSTRUCTION DETAILS - MODIFIED FOR KOPEX FIXING, SURFACE CLIPPED SWA TO RUN FROM INTERFACE CABINET INTO STORE USING APPROPRIATELY CLIPPED AND SET CABLE.

RISK ASSESSMENT AND TRAFFIC MANAGEMENT PLAN WHERE APPROPRIATE TO BE SUBMITTED FOR APPROVAL PRIOR TO WORKS COMMENCING.

	Euro Car Parks Ltd 30 Dorset Square London NW1 6QJ +44 (0)20 7563 3000	DRAWING NO.	REVISION.	DATE.	PIA:	SITE:
	Registered in England & Wales, Registration No 1270612	3452-DWG-03-01	01	18/05/22		
		SCALE AT.	DRAWN.	CHECKED.		
		NOT TO SCALE	SS	AM 20/05/22		

REVISIONS:		BY:	DATE:
REV:	DESCRIPTION:		
01	ANPR SHEET LAYOUT	SS	18/05/22