

Bridge Name	Fignon Cycle Bridge
Bridge Number	6222
Location	Marston Cycle Path, University Parks, Oxford Grid reference: SP 52139 07090 W3W: ///rich.nerve.cards
Inspection date	22/06/2021
Inspection type	General inspection with special inspection of concrete deck
Inspected by	Ben Dodds
Bridge type	Foot/cycle bridge
Structure description	Single span, post tensioned concrete portal frame/arch. Bespoke aluminium parapets. Reinforced concrete deck. Resin bound gravel finish
Span(s)	13.7m
Overall width	2.68m
Width between parapets	2.46m
Inspectors Comments	<p>Bridge is generally in good condition, but with significant defects to load carrying elements.</p> <p>Main beams appear to be in sound condition but have widespread surface algae growth.</p> <p>The reinforced concrete decking appears to be a Hy-Rib deck spanning between the main beams. There is wide delamination of the soffit which was hollow sounding when tapped with a hammer. A large area of the soffit concrete cover was missing and additional areas spalled off following light tapping with a hammer. The Hy-Rib reinforcement is exposed and is corroded to its full exposed extent. Corrosion appears to be shallow, but it is not possible to discern the current thickness of steel. Additional small areas of spalling were identified.</p> <p>The abutments are formed of the portal legs of the main beams with a mass concrete infill. This was found to be in sound condition.</p> <p>Parapets are aluminium and in good condition but are approximately 860mm high and substandard for a cycle route. Localised damaged was identified but the effected elements are not load bearing.</p> <p>Surfacing is resin bound gravel and in sound condition</p>
Inspectors recommendations	<p>The existing deck should be assessed for structural capacity, and consideration given to replacement. The river is open to public and delaminated concrete is posing a risk.</p> <p>The parapet should be risk assessed and consideration given to replacement.</p> <p>Consider cleaning concrete elements.</p>

Photos



Elevation



Elevation



Large spall to reinforced concrete deck soffit



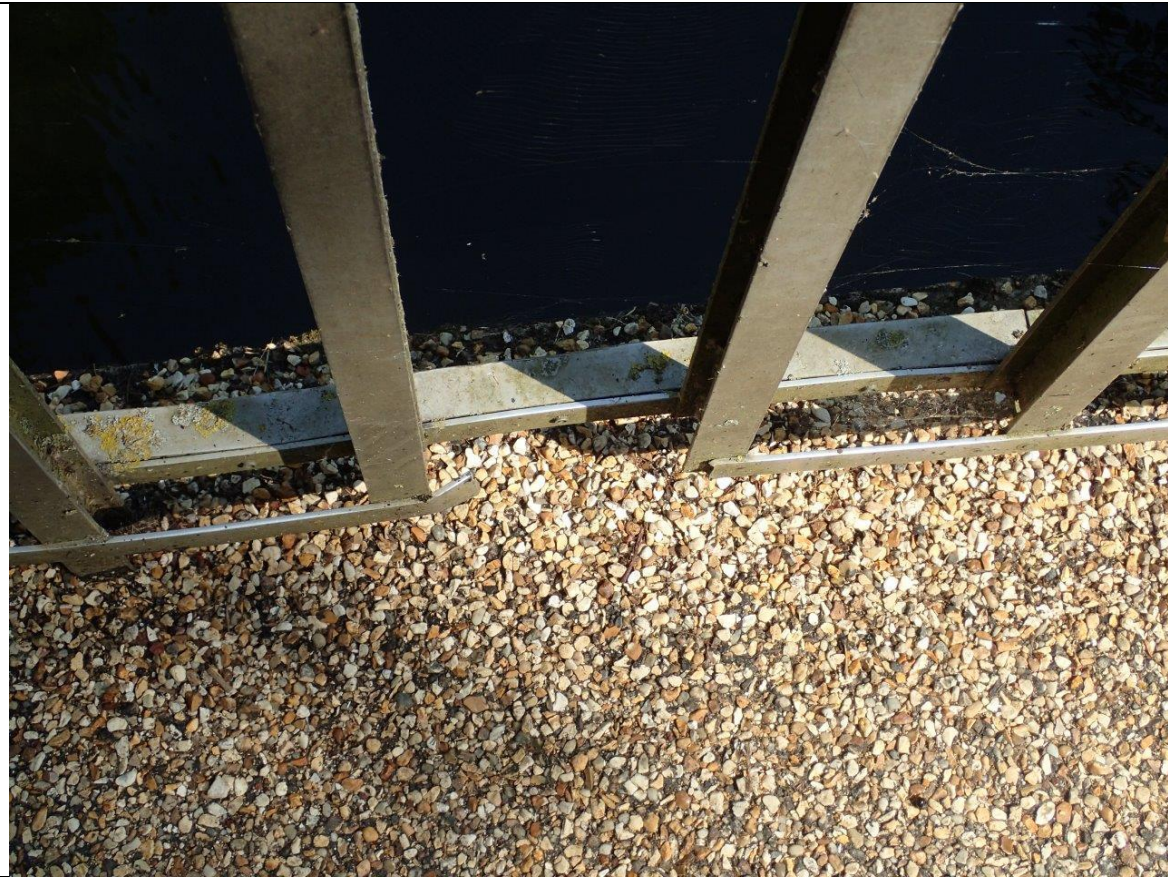
Large spall to reinforced concrete deck soffit



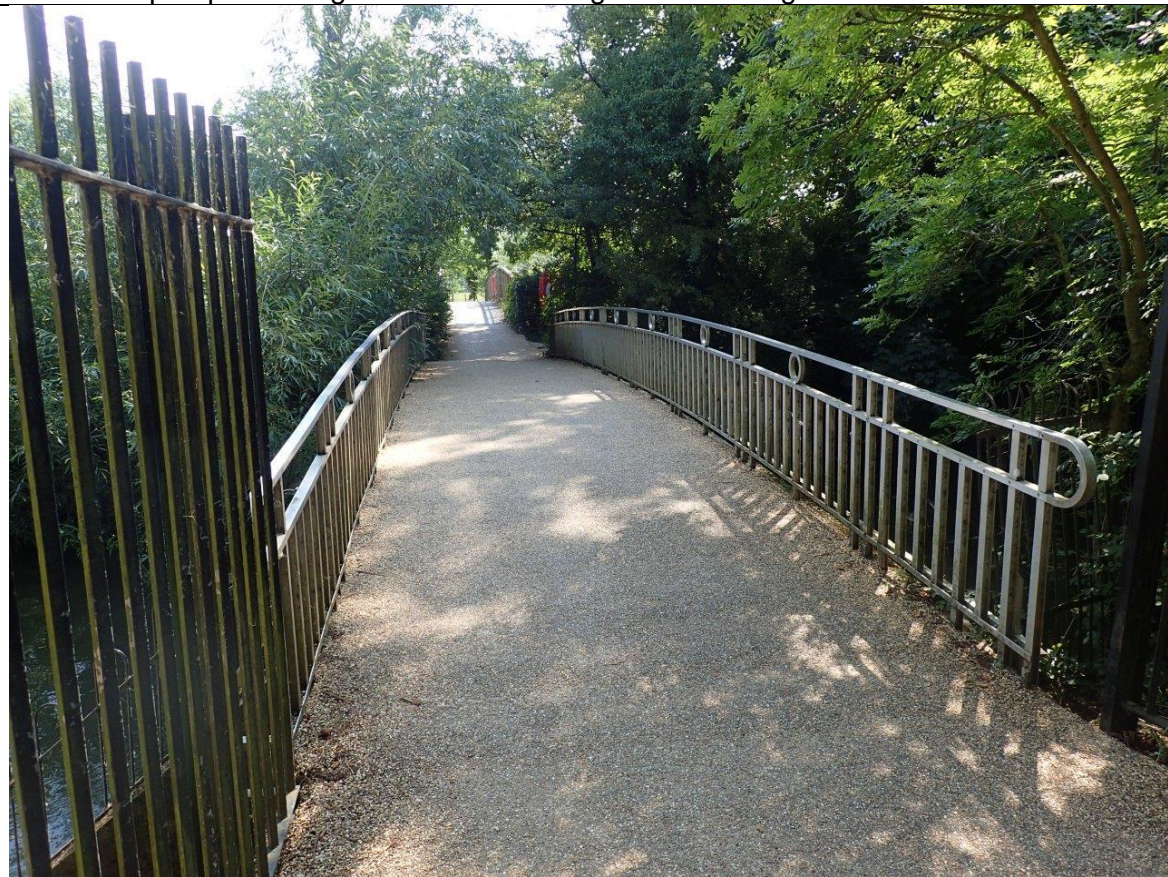
Deck soffit



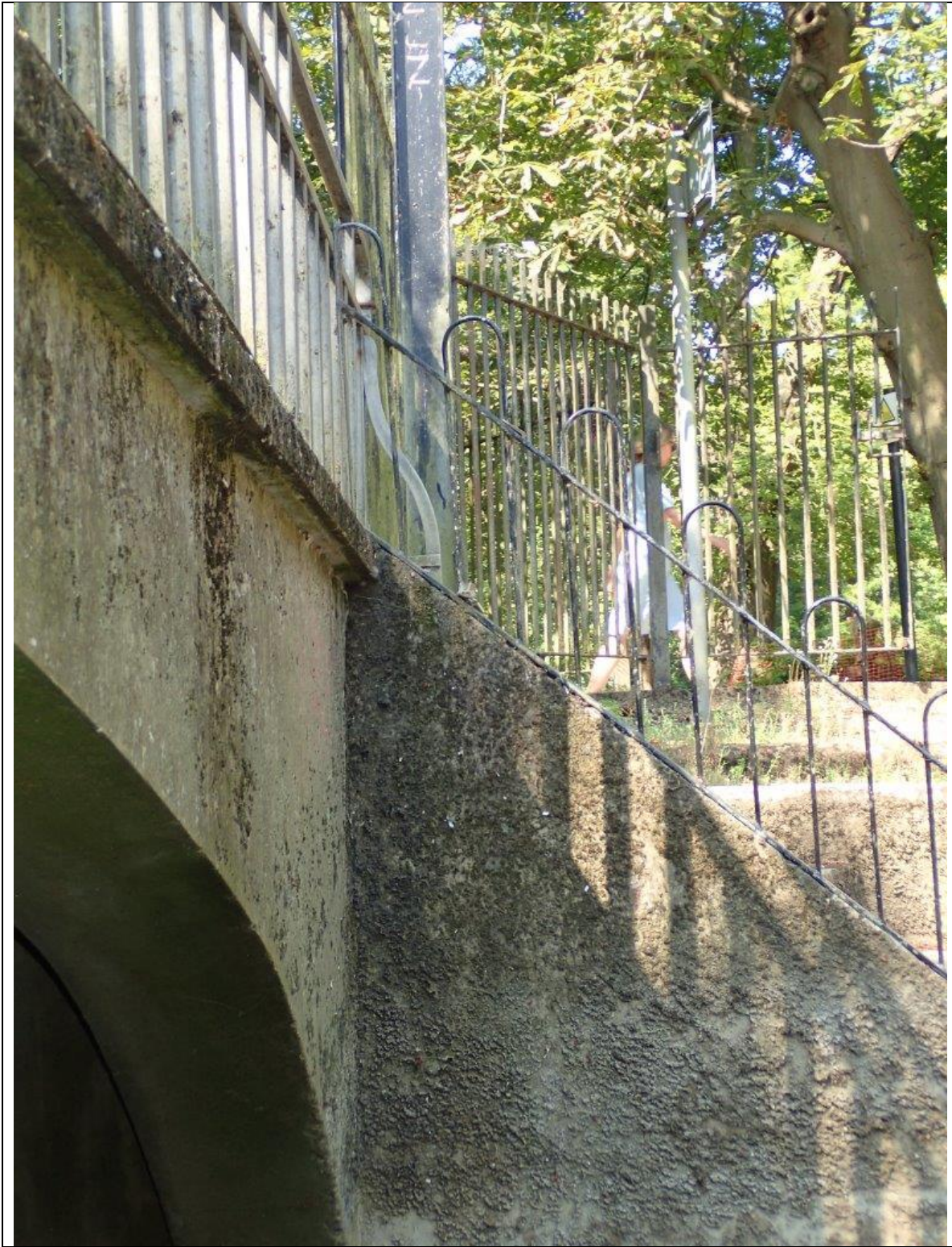
Elevation



Localised parapet damage and resin bound gravel surfacing



Top of structure



Wingwall