

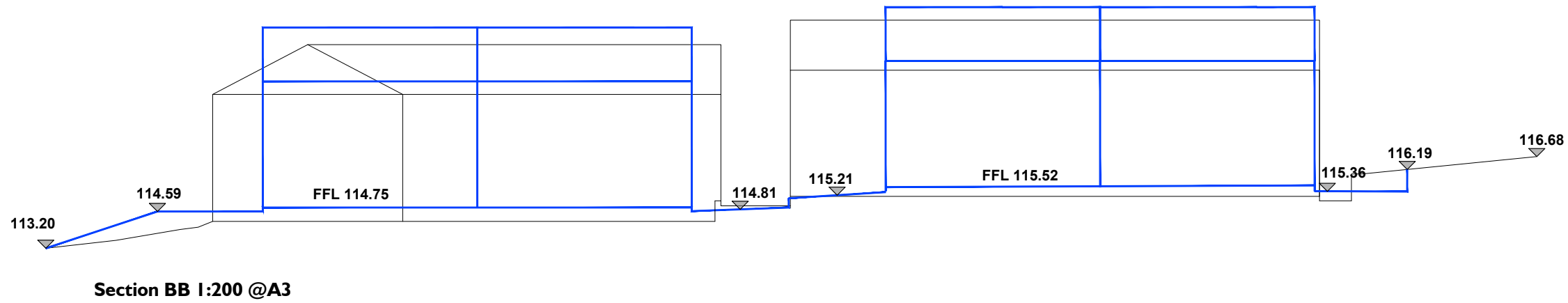
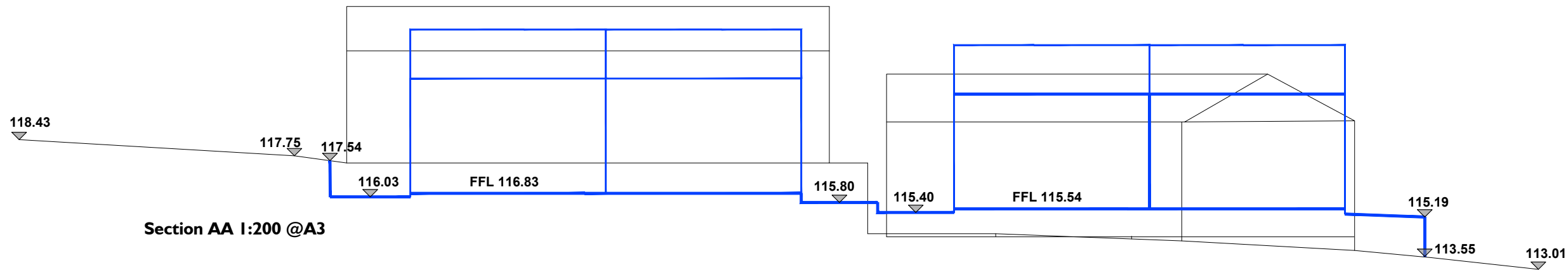
This drawing is COPYRIGHT. It must not be reproduced or disclosed to third parties without our prior permission. Do not scale from this drawing, or, interrogate and use electronic information.

Any discrepancies should be reported immediately.

Any surveyed information incorporated within this drawing cannot be guaranteed as accurate unless confirmed by a fixed dimension. All dimensions are in millimetres unless noted otherwise.

KEY

- Existing Section
- Proposed Section



Head Office
29 Broad Street
Newtown
Powys
SY16 2BQ
t - 01686 610311
w - www.hughesarchitects.co.uk

Project Redevelopment of Pen y Bryn and Ael y Bryn, Ystradgynlais, Powys			
Drawing Status Stage 3a		Drawing Title Indicative Site Sections	
Scale 1:200@A3	Date 24.01.23	Drawing No X078.3a.3.304	Rev
Drawn by GSP		Checked DH	