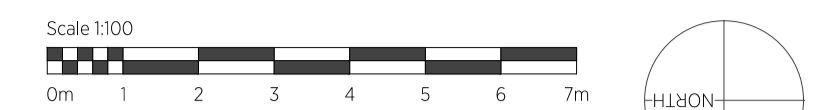


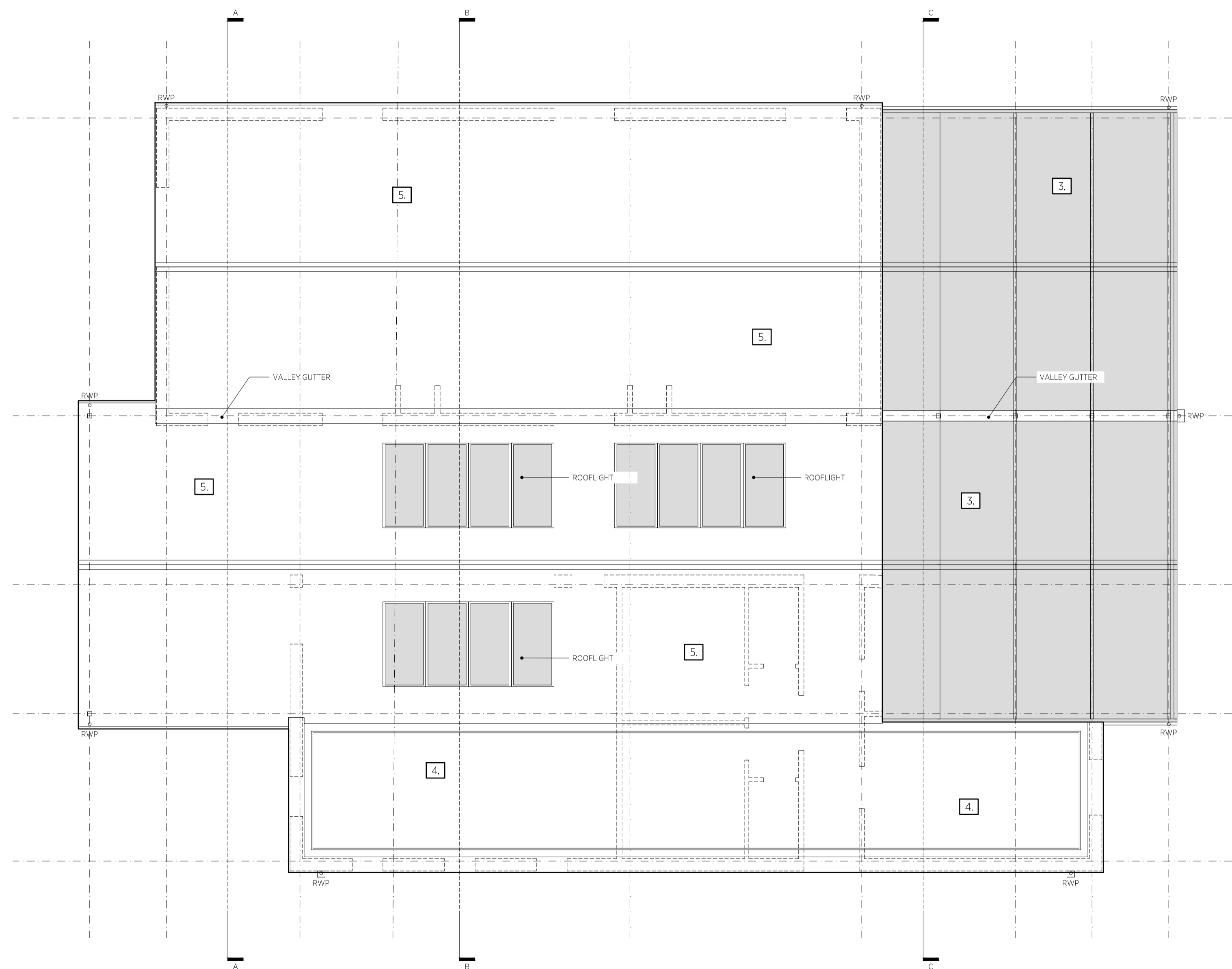
Do not scale from drawings - scale bars have been provided for planning purposes only. If a setting out dimension is required, please ask. When working with existing structures and services, any contractor is to check/ make own survey record against what is presented in these documents - in particular when below ground items are exposed. Drawings to be read in conjunction with any written specifications, schedules and specialist consultants design information.

Prince & Gisbey Architects owns the copyright of this drawing, which must not be reproduced in the whole or part without the written permission of Prince & Gisbey Architects.



Status  
**PLANNING**

Revision  
A ISSUED FOR PLANNING. Date  
22.08.2023



**PROPOSED MATERIAL KEY**

|   |  |
|---|--|
| 1. <b>BRICK</b>   |  |
| RECLAIMED TRADITIONAL RED BRICK WITH LIME MORTAR POINTING |  |
| 2. <b>HEMP CLADDING</b>                                   |  |
| 13/3 HEMP FIBRE CORRUGATED PANELS                         |  |
| 3. <b>GLASSHOUSE</b>                                      |  |
| BESPOKE COMMERCIAL GLASSHOUSE STRUCTURE BY SPECIALIST     |  |
| 4. <b>GREEN ROOF</b>                                      |  |
| EXTENSIVE GREEN ROOF                                      |  |
| 5. <b>CORRUGATED CLADDING</b>                             |  |
| 13/3 CORRUGATED ROOFING PANEL - GALVANISED                |  |
| 6. <b>RAINWATER GOODS</b>                                 |  |
| GALVANISED STEEL  |  |

**PLANNING**

**prince&gisbey** architects  
RIBA Chartered Practice

enquiry@pandarch.co.uk | www.pandarch.co.uk | 51 Shamrock Ave, Whitstable, CTS 4EL  
T: 0764 495 301 or 07970 625 236 | Prince & Gisbey Architects Ltd (co no: 12064082)

Project\_Drawing Title: VISITOR INFORMATION & LEARNING CENTRE for: BROGDAL COLLECTIONS Project\_Drawing No: 233\_PL\_101 Revision: A Scale: 1:100 @ A1 Date: AUG 2023 Drwn Chkd: BP MG Originally printed at A1

**PROPOSED:  
ROOF PLAN**