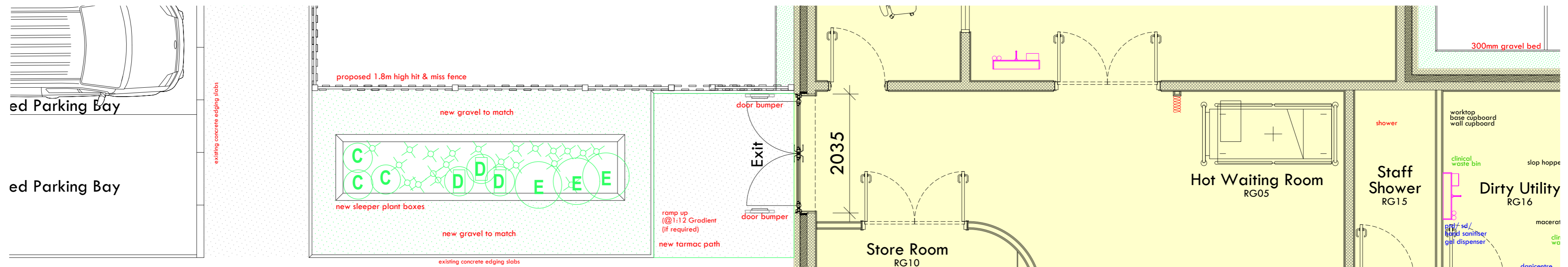
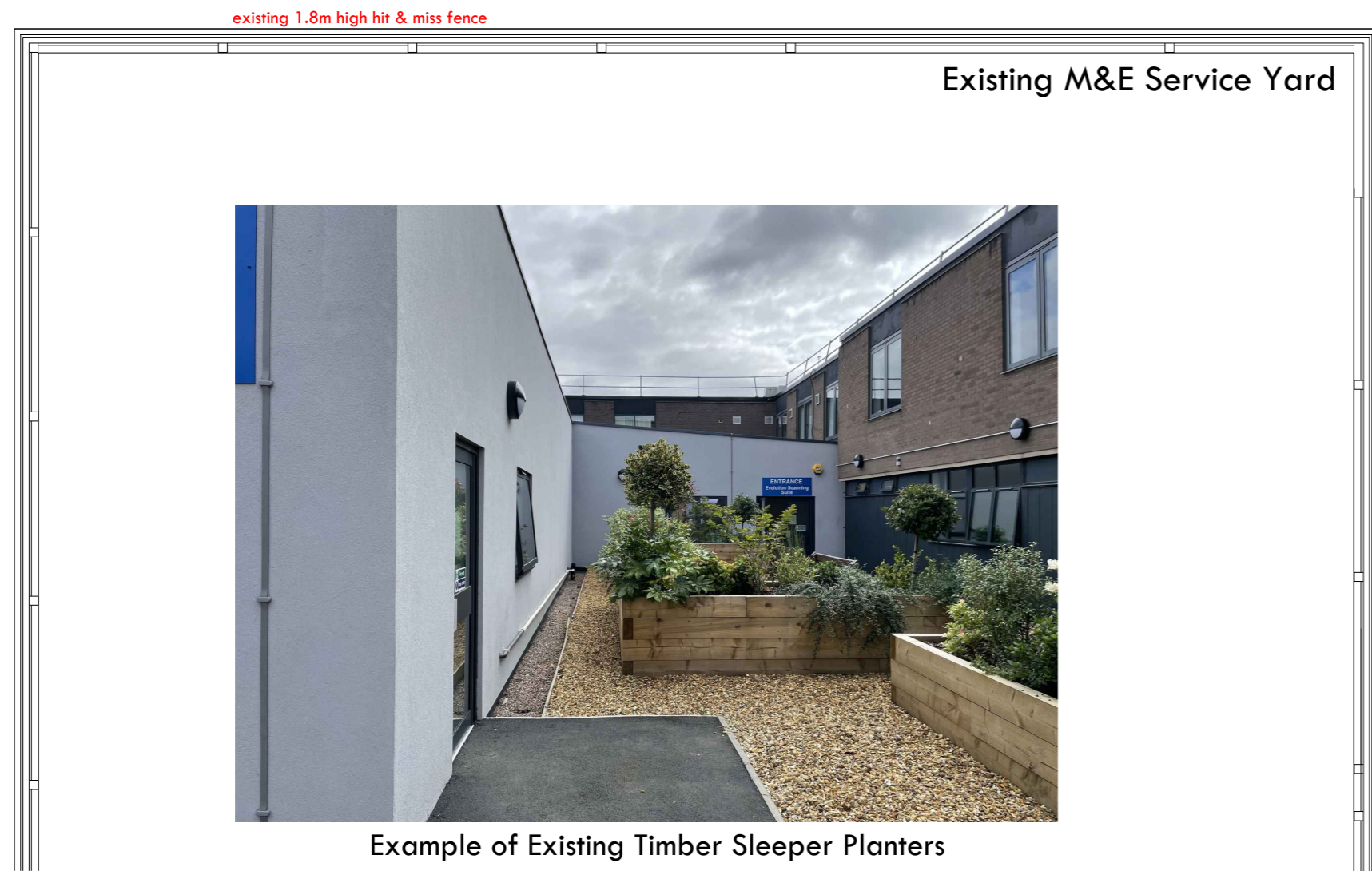


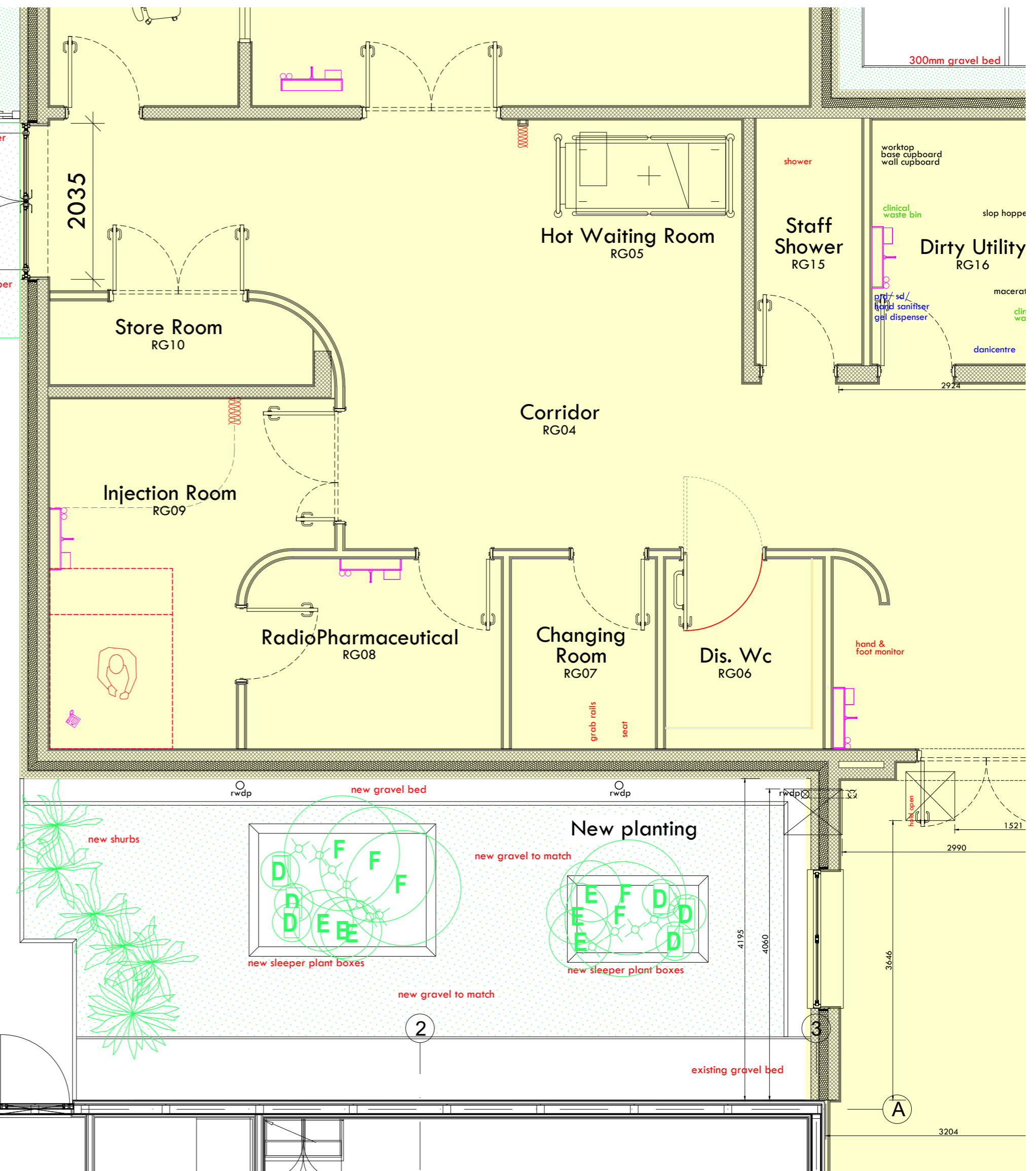
Landscape Plan:



Existing Tarmac Footpath



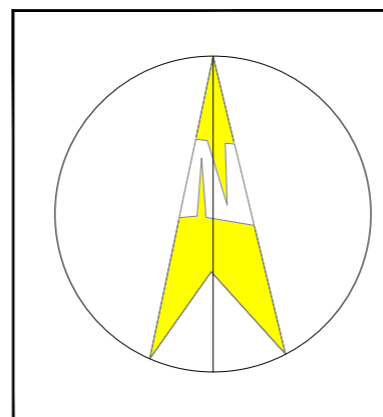
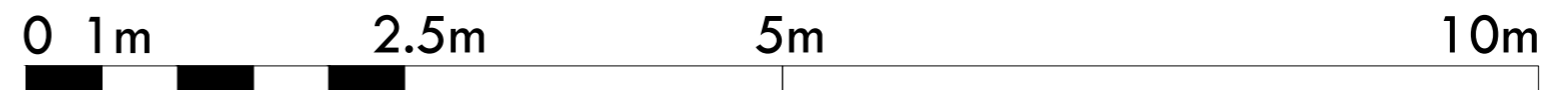
Example of Existing Timber Sleeper Planters



KEY:

- PAS 68 HVM Static Terra Jupiter Bollard - Frontier Pitts Ltd
PAS 69 installation guidance of 1.2 m maximum distance between upright faces.
Size and profile - Ø273 mm, Height - 1000 mm, Post top - Mitre.
- Shrubs:
Lavendula Augustifolia Mustead
Phalaris Grass
Houttuynia
Cotoneaster Horizontalis
} Shrubs to be mixed and planted at 1000mm centres
- A - Phormium tenax - New Zealand flax 2.5m height - 1.5m spread
B - Euphorbia characias subsp. wulfenii 'John Tomlinson' - 1m high - 1.5m spread
C - Echinacea purpurea 'Ruby Giant' - 0.5/1m high 0.1-0.5 spread
D - Echinacea purpurea 'Virgin' - 0.5/1m high 0.1-0.5 spread
E - Miscanthus sinensis 'Flamingo' - eulalia 'Flamingo' - 1/1.5m high - 0.5/1m spread
F - Phormium cookianum subsp. hookeri 'Tricolor' - mountain flax 'Tricolor' - 1.5 high - 2m spread

Plan:
SCALE: 1:50



No	Date	Amended Description
21.08.2023	FIRST ISSUE	

hha architects
horsley huber architects ltd
Stafford Castleberg Studios 134 Newport Road ST16 2HB
tel: 01785 251 238
e: stafford@hastudio.com w: www.hastudio.com

Client The Shrewsbury & Telford Hospital Trust Mytton Oak Road, Shrewsbury, SY3 8XQ		
Job Royal Shrewsbury Hospital Nuclear Medicine Suite Gamma Camera	Job No 4890	
Drawing Plans: Landscape Plan:	Rev PL1 Drawing No PL 003	Scale 1:50 (A2)
Drawn PB/NT	Checked PB	Date AUG 2023

Do not scale. Check all dimensions on site. This drawing is copyright