

Disclaimer:
This drawing is to be read in conjunction with all other relevant drawings and specifications.
No part of this drawing is to be construed as a contract or agreement of any kind and shall be void if it is not read in conjunction with the full set of drawings and specifications.
Responsibility cannot be accepted for alterations and/or omissions from this drawing without prior agreement by Chartway Group.

Copyright:
Copyright reserved. This drawing may only be used for the project and location specified in the title block. It may not be copied, distributed or used for any other purpose without prior written consent from Chartway Group.

Prior to any work commencing on site, the contractor is to be consulted regarding the current status, content or regulatory approval of this drawing.

All work to be in the strict accordance of the PREVIOUS EDITION of local authority and other relevant statutory orders or regulations to which this drawing is subject and provided to be the best of their respective knowledge and skill at the time of the issue of this drawing and in no event shall the contractor be held liable for any loss or damage arising from any error or omission in this drawing.

**THE DRAWING TO BE READ IN CONJUNCTION WITH ALL RELEVANT DRAWINGS AND SPECIFICATIONS.
No part of this drawing is to be construed as a contract or agreement of any kind and shall be void if it is not read in conjunction with the full set of drawings and specifications.
Responsibility cannot be accepted for alterations and/or omissions from this drawing without prior agreement by Chartway Group.**

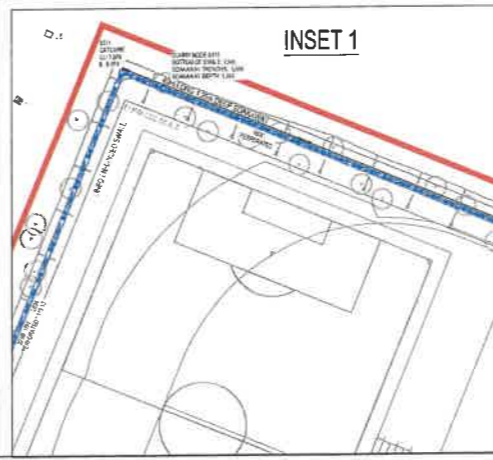


SEE INSET 1 CONTINUATION

SEE INSET 1 CONTINUATION

Recreation Ground

- KEY:**
- Site boundary
 - Proposed Building FFL
 - Proposed surface water drainage pipe and manhole to be adopted by Drainage Authority
 - Proposed highway gully and 150mm diameter pipe connection
 - Proposed surface water headwall to be adopted by Drainage Authority
 - Proposed Perforated surface water pipe (SuDS Pipe OR pipe below Lined Enhanced Swale OR Enhanced Swale) as shown
 - Proposed surface water drainage pipe and manhole to be adopted by KCC Highways (See Dwg CON608-3711, 3737 & 3738)
 - Proposed highway gully and 150mm diameter pipe connection to be adopted by KCC Highways (See Dwg CON608-3711, 3737 & 3738)
 - Proposed surface water headwall to be adopted by KCC Highways (See Dwg CON608-3711, 3737 & 3738)
 - Proposed gully outlet to be adopted by KCC Highways (See Dwg CON608-3711, 3737 & 3738)
 - Proposed drainage pipe bedding type 2 (concrete encasement)
 - Proposed foul water drainage pipe and manhole to be adopted by Drainage Authority
 - Proposed foul water rising main to be adopted by Drainage Authority
 - Existing Southern Water foul sewer to remain
 - Foul Water Inspection Chamber (450mm PPI) & Pipe (to be maintained by Management Company)
 - Surface Water Inspection Chamber (450mm PPI) & Pipe (to be maintained by Management Company)
 - Surface Water Rodding Eye (to be maintained by Management Company)
 - Yard Gully and Connection (to be maintained by Management Company)
 - Aco Drainage Channel (to be maintained by Management Company)
 - Private rainwater pipe and connection (to be maintained by house owner)
 - Denotes proposed Green-Tech RootBarrier 260 permeable or similar approved
 - Denotes proposed utilities corridor (1.5-1.8m wide) to be read in conjunction with NAG guidance / recommendations
 - Denotes Landscape buffer (see Architects Drawings for Details)
 - Proposed Trees (see Landscape Architects Drawings for Details)



INSET 1

REV	DESCRIPTION	DATE	BY
01	ISSUE FOR APPROVAL	24.08.2023	MC
02	ISSUE FOR APPROVAL	18.08.2023	MC

PLANNING APPROVAL

CHARTWAY GROUP

Drawing Title:
SITE WIDE PROPOSED DRAINAGE GENERAL ARRANGEMENT (2 OF 2)

Scale @ A0: **1:500**
Date: **MAY 23**

Org No. **CON608-3886** Revision **P02**

This drawing must be read in conjunction with relevant Chartway specifications and standard details. This drawing is subject to copyright. Do not scale from this drawing