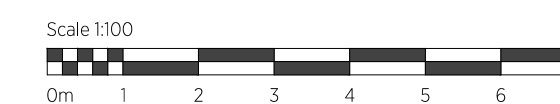


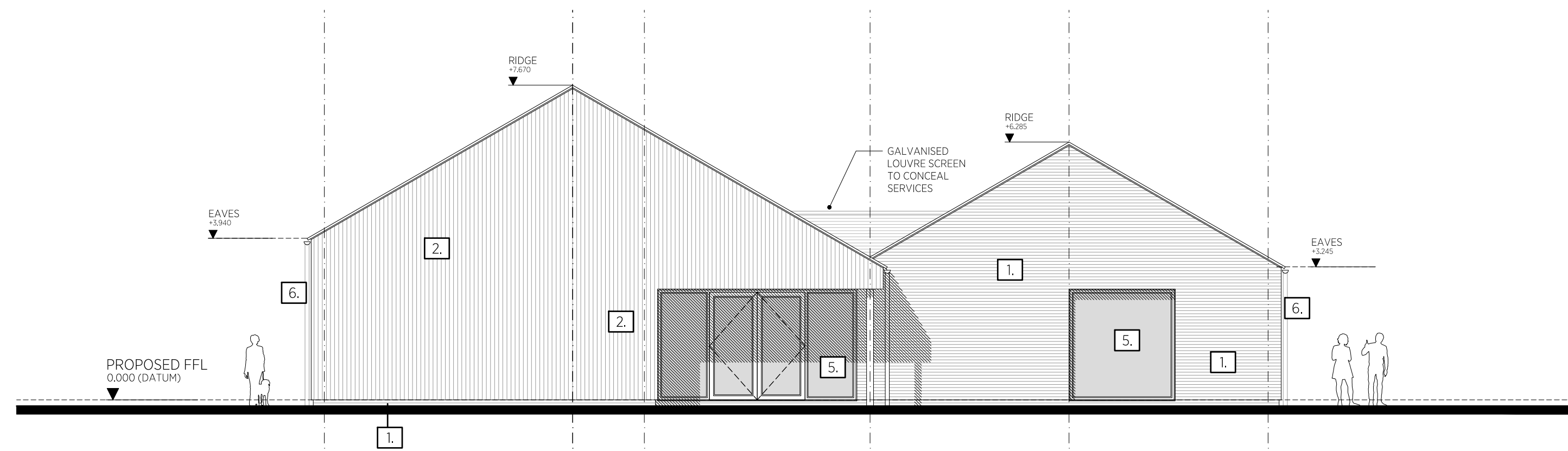
Do not scale from drawings - scale bars have been provided for planning purposes only. If a setting out dimension is required, please ask. When working with existing structures and services, any contractor is to check/ make own survey record against what is presented in these documents - in particular when below ground items are exposed. Drawings to be read in conjunction with any written specifications, schedules and specialist consultants design information.

Prince & Gisbey Architects owns the copyright of this drawing, which must not be reproduced in the whole or part without the written permission of Prince & Gisbey Architects.

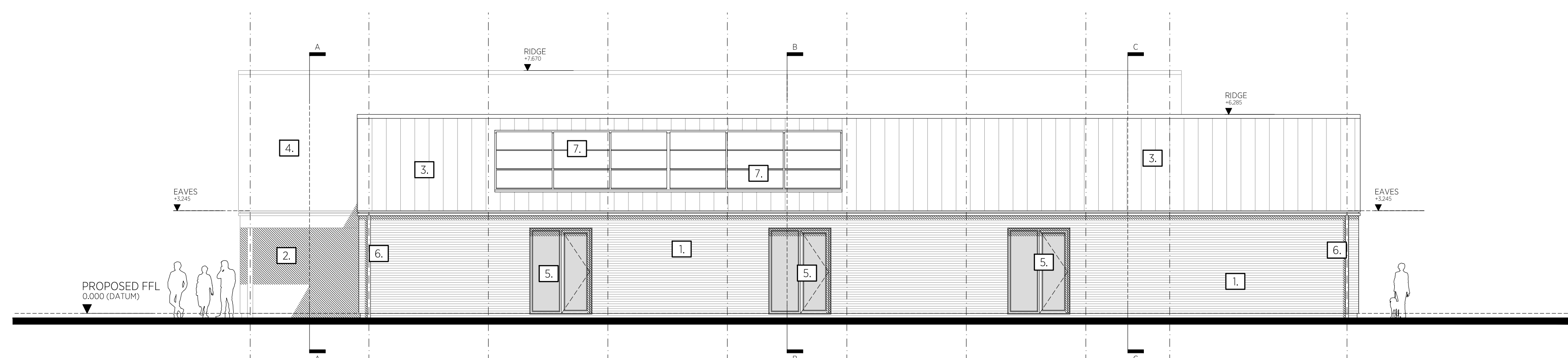


Status  
**PLANNING**

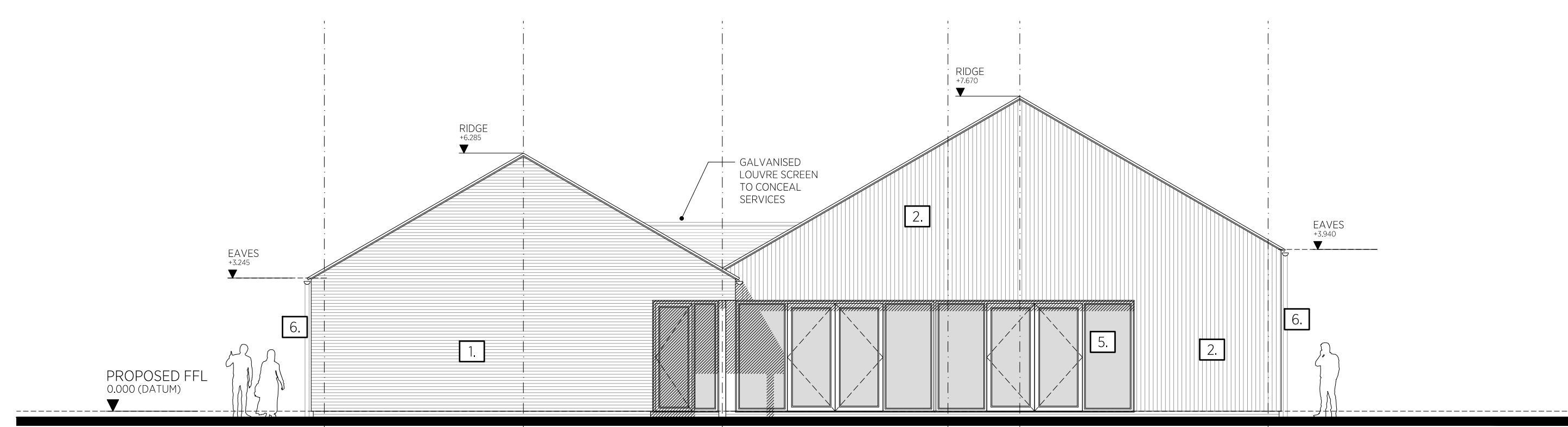
Revision  
E ISSUED FOR PLANNING. Date 15.02.2024



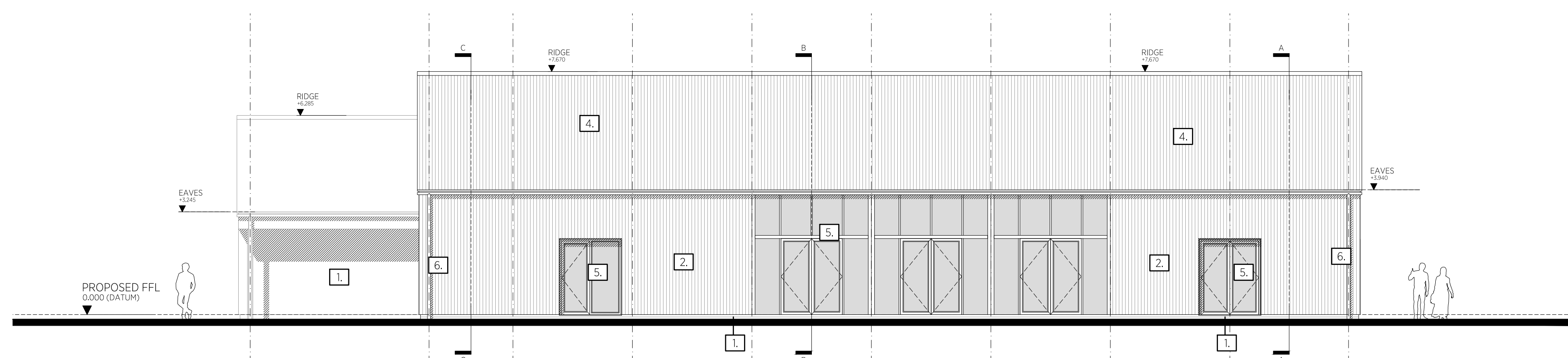
NORTH ELEVATION



WEST ELEVATION



SOUTH ELEVATION



EAST ELEVATION

PROPOSED MATERIAL KEY

1. BRICK	
RECLAIMED TRADITIONAL RED BRICK WITH LIME MORTAR POINTING	
2. HEMP CLADDING	
13/3 HEMP FIBRE CORRUGATED PANELS	
3. METAL ROOFING	
ALUMINIUM/ZINC STANDING SEAM ROOF - DARK GREY	
4. CORRUGATED ROOFING	
13/3 CORRUGATED ROOFING PANEL - GALVANISED	
5. WINDOWS AND DOORS	
ALUMINIUM IN DARK GREY FINISH EXTERNALLY	
6. RAINWATER GOODS	
GALVANISED STEEL	
7. SOLAR PHOTOVOLTAICS	
INSET / IN-ROOF MOUNTED SOLAR PHOTOVOLTAICS	

**PLANNING**

**prince&gisbey** architects  
RIBA Chartered Practice

enquiry@pandarch.co.uk | www.pandarch.co.uk | 51 Shamrock Ave, Whitstable, CT5 4EL  
T: 07764 495 301 or 07970 625 236 | Prince & Gisbey Architects Ltd (co no: 12064082)

Project\_Drawing Title: VISITOR INFORMATION & LEARNING CENTRE for: BROGDAL COLLECTIONS  
Project\_Drawing No: 233\_PL\_103  
Revision: E

Scale: 1:100 @ A1  
Date: FEB 2024  
Drawn Chkd: BP MG  
Originally printed at A1

**PROPOSED:  
ELEVATIONS**