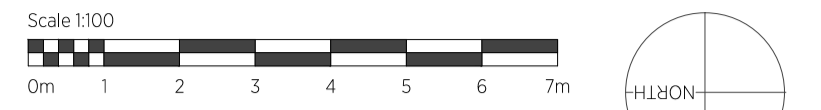
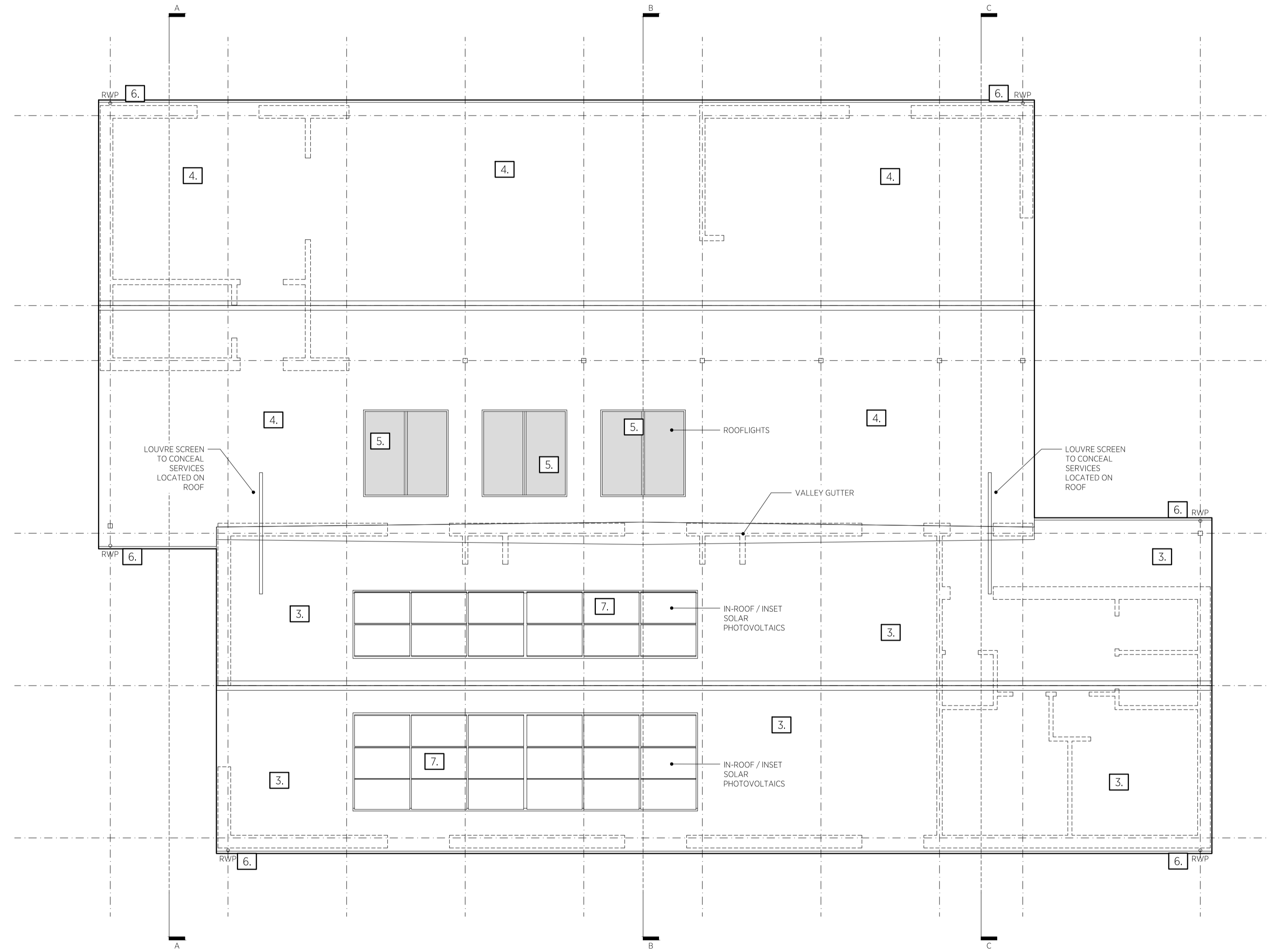


Do not scale from drawings - scale bars have been provided for planning purposes only. If a setting out dimension is required, please ask. When working with existing structures and services, any contractor is to check/ make own survey record against what is presented in these documents - in particular when below ground items are exposed. Drawings to be read in conjunction with any written specifications, schedules and specialist consultants design information.

Prince & Gisbey Architects owns the copyright of this drawing, which must not be reproduced in the whole or part without the written permission of Prince & Gisbey Architects.



Scale 1:100  
 Status  
**PLANNING**  
 Revision  
 E ISSUED FOR PLANNING. Date  
 15.02.2024



**PROPOSED MATERIAL KEY**

1. <b>BRICK</b> RECLAIMED TRADITIONAL RED BRICK WITH LIME MORTAR POINTING	
2. <b>HEMP CLADDING</b> 13/3 HEMP FIBRE CORRUGATED PANELS	
3. <b>METAL ROOFING</b> ALUMINIUM/ZINC STANDING SEAM ROOF - DARK GREY	
4. <b>CORRUGATED ROOFING</b> 13/3 CORRUGATED ROOFING PANEL - GALVANISED	
5. <b>WINDOWS AND DOORS</b> ALUMINIUM IN DARK GREY FINISH EXTERNALLY	
6. <b>RAINWATER GOODS</b> GALVANISED STEEL	
7. <b>SOLAR PHOTOVOLTAICS</b> INSET / IN-ROOF MOUNTED SOLAR PHOTOVOLTAICS	

**PLANNING**

**prince&gisbey** architects  
 RIBA Chartered Practice

enquiry@pandarch.co.uk | www.pandarch.co.uk | 51 Shamrock Ave, Whitstable, CT5 4EL  
 T: 07764 495 301 or 07970 625 236 | Prince & Gisbey Architects Ltd (co no: 12064582)

Project\_Drawing Title: VISITOR INFORMATION & LEARNING CENTRE for: BROGDAL COLLECTIONS  
 Project\_Drawing No: **233\_PL\_101**  
 Revision: **E**  
 Scale: 1:100 @ A1  
 Date: FEB 2024  
 Drwn Chkd: BP MG  
**PROPOSED: ROOF PLAN**  
 Originally printed at A1