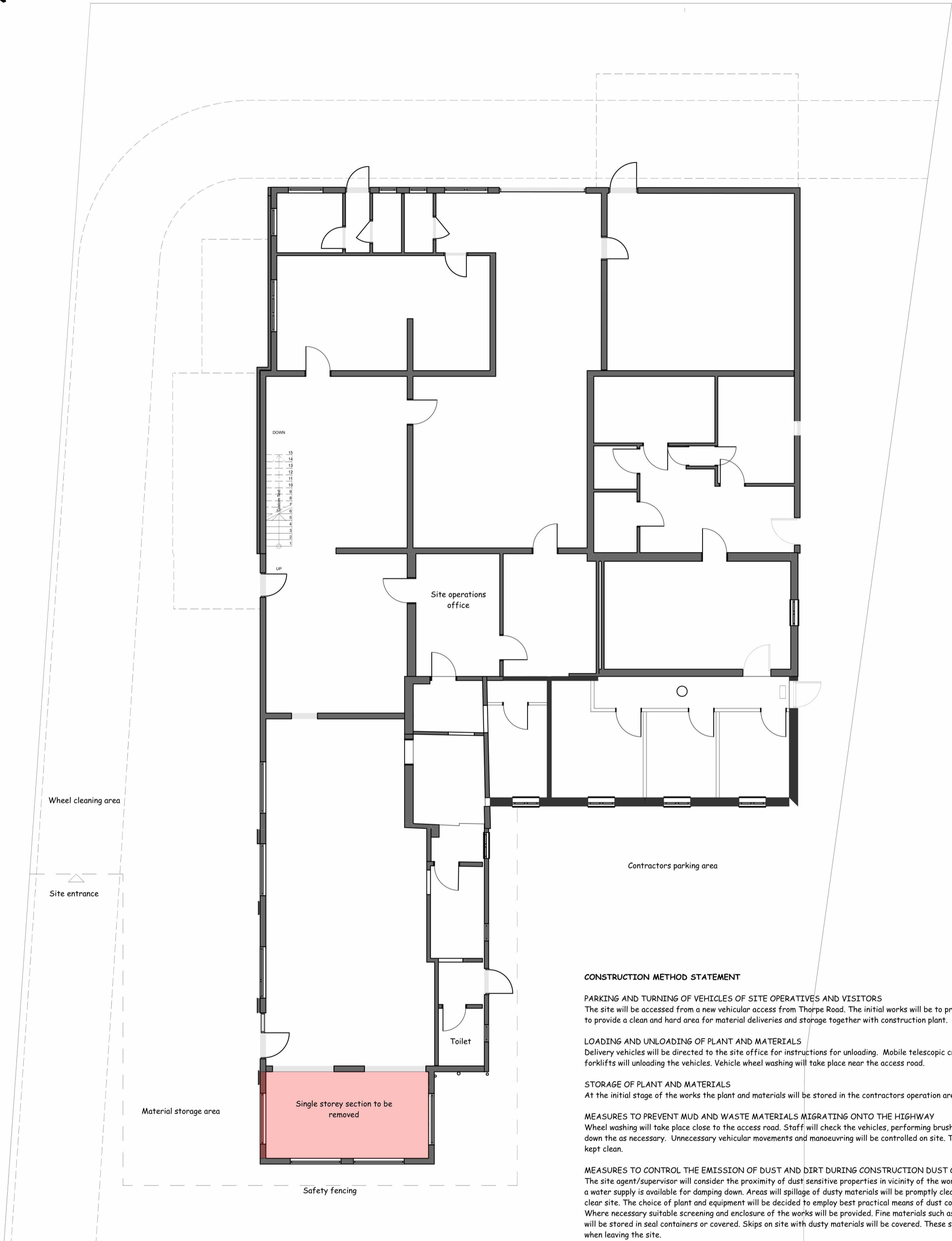


This document and its design content is copyright ©. It shall be read in conjunction with all other associated project information including models, specifications, schedules and related consultants documents. Do not scale from documents. All dimensions to be checked on site. Immediately report any discrepancies, errors or omissions on this document to the Originator. If in doubt ASK.
It is assumed that all works on this drawing will be carried out by a competent contractor working, where appropriate, to an appropriate method statement.



CONSTRUCTION METHOD STATEMENT

PARKING AND TURNING OF VEHICLES OF SITE OPERATIVES AND VISITORS
The site will be accessed from a new vehicular access from Thorpe Road. The initial works will be to prepare a level base to provide a clean and hard area for material deliveries and storage together with construction plant.

LOADING AND UNLOADING OF PLANT AND MATERIALS
Delivery vehicles will be directed to the site office for instructions for unloading. Mobile telescopic cranes or site forklifts will unloading the vehicles. Vehicle wheel washing will take place near the access road.

STORAGE OF PLANT AND MATERIALS
At the initial stage of the works the plant and materials will be stored in the contractors operation area.

MEASURES TO PREVENT MUD AND WASTE MATERIALS MIGRATING ONTO THE HIGHWAY
Wheel washing will take place close to the access road. Staff will check the vehicles, performing brushing and washing down the as necessary. Unnecessary vehicular movements and manoeuvring will be controlled on site. The highway will kept clean.

MEASURES TO CONTROL THE EMISSION OF DUST AND DIRT DURING CONSTRUCTION DUST CONTROL
The site agent/supervisor will consider the proximity of dust sensitive properties in vicinity of the works and ensure that a water supply is available for damping down. Areas with spillage of dusty materials will be promptly cleared to maintain a clear site. The choice of plant and equipment will be decided to employ best practical means of dust control. Where necessary suitable screening and enclosure of the works will be provided. Fine materials such as cement and sand will be stored in seal containers or covered. Skips on site with dusty materials will be covered. These skips will be covered when leaving the site.

WORKING CLOSE TO PUBLIC AREAS
The site will be shielded from public areas with Heras Security Fencing with signage warning of construction works. Entry to the site will be supervised by the site agent. Deliveries will be limited to off peak hours where possible. Scaffolding abutting public areas will be erected by competent persons and maintained in a safe condition. Excavated areas will be protected by barriers.

WORKING HOURS
No vehicle connected with the works to arrive on site before 07:30 or leave after 19:00 (except in the case of emergency). Working hours to be restricted between 08:00 and 18:00 Mondays to Saturdays (finishing at 13:00 on Saturdays) with no working of any kind permitted on Sundays or any Public/Bank Holiday whilst construction works and alterations are being carried out.

BURNING
No burning of materials, waste etc to be carried out on the site.

THORPE ROAD

job
PROPOSED ALTERATIONS AND EXTENSION TO
27-29 THORPE ROAD, KIRBY CROSS, ESSEX, CO13 0LT
FOR PECON PROPERTIES LIMITED

| RevID | Date | Comment | Approved by |
|-------|------|---------|-------------|
| | | | |

title
PLANNING STAGE
CONSTRUCTION METHOD STATEMENT

scales @ A2
1:100
job no.
2567
drawing no.
50
date
MARCH 2024
drawn
IDS
revision



design & development consultancy
Herringbone, Harold Way, Frinton on Sea, Essex, CO13 9BA
Telephone [REDACTED] & [REDACTED]
Website www.design-development.co.uk
Copyright © Design and Development Consultancy