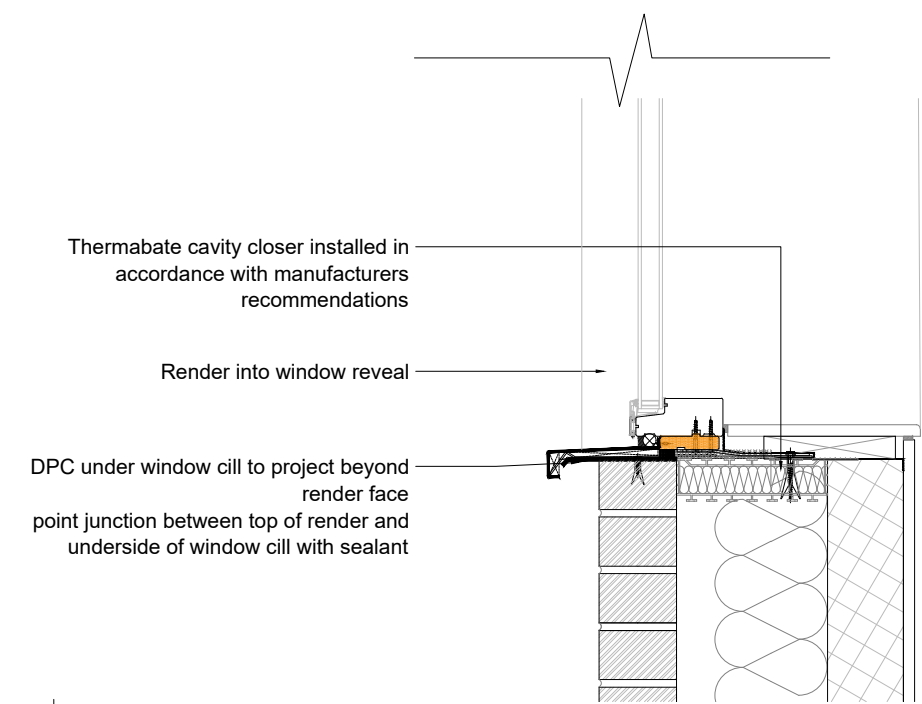
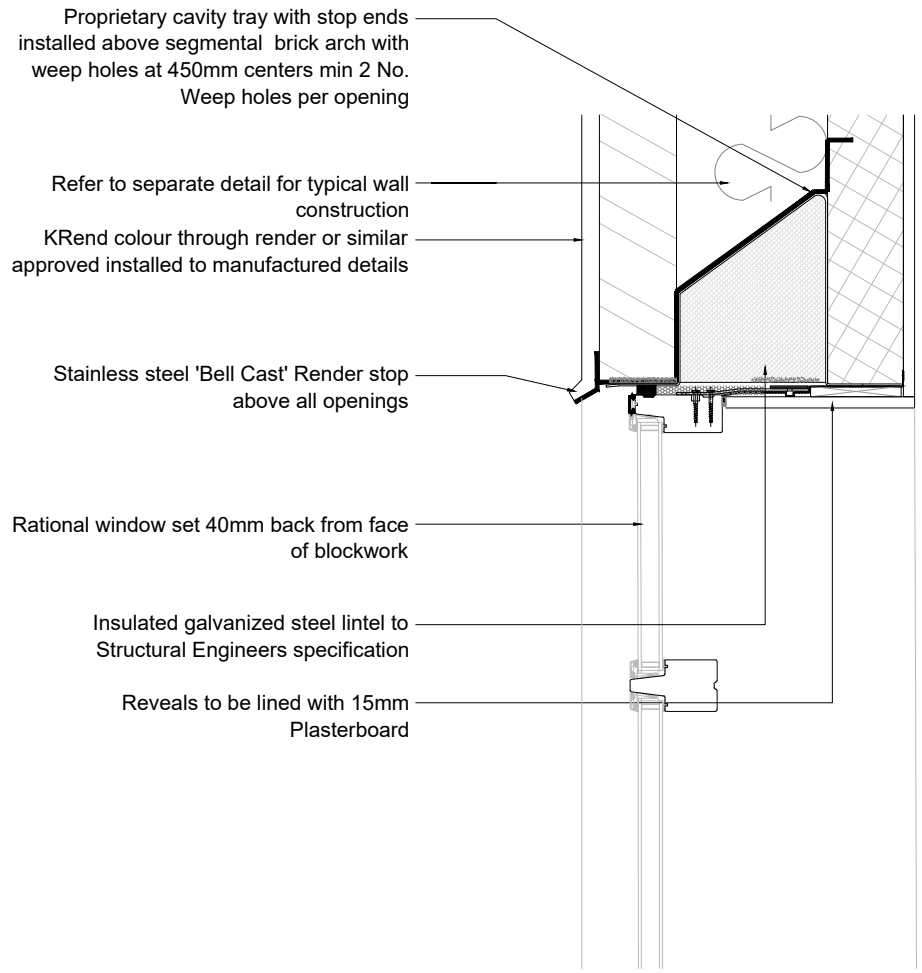
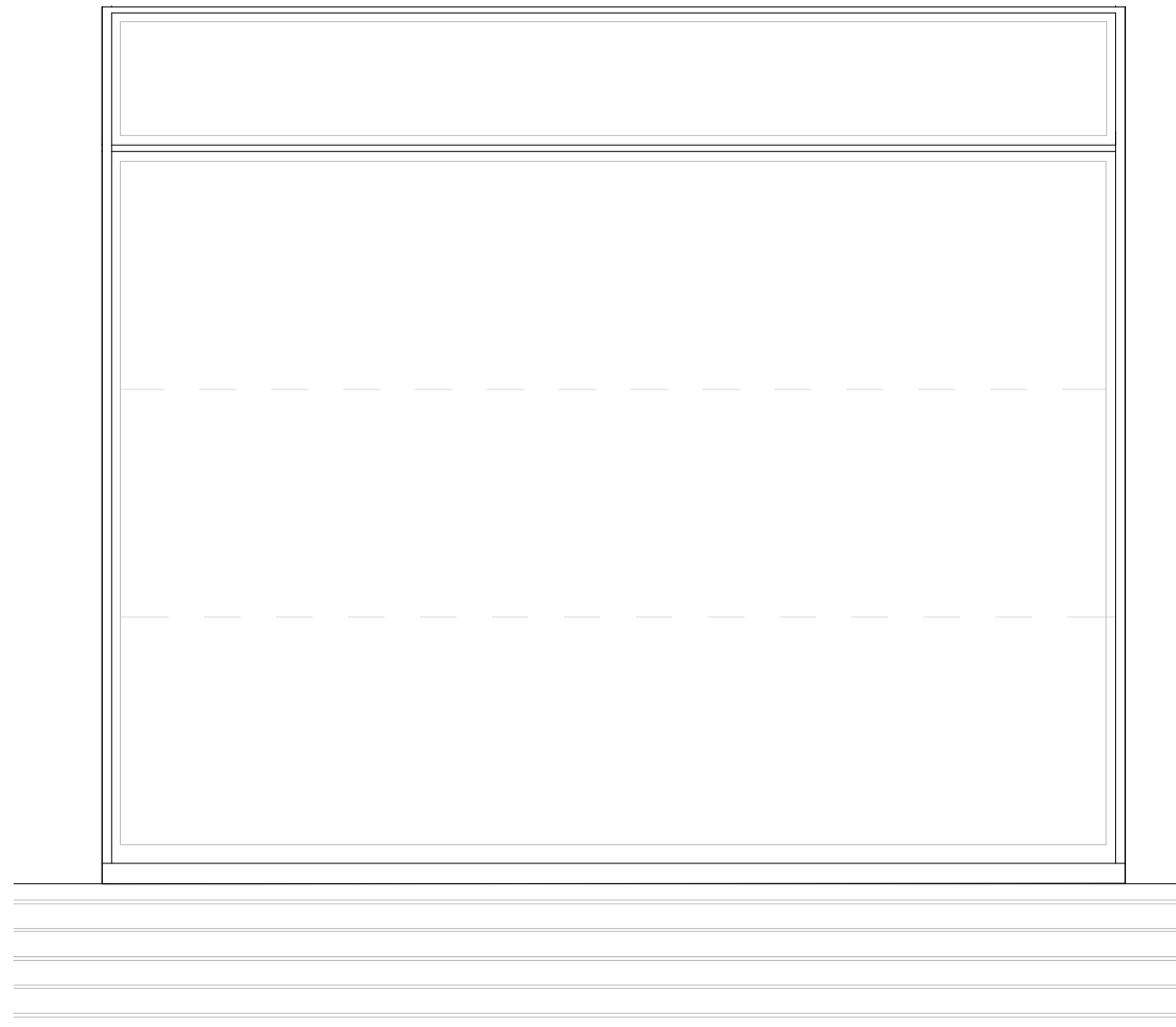


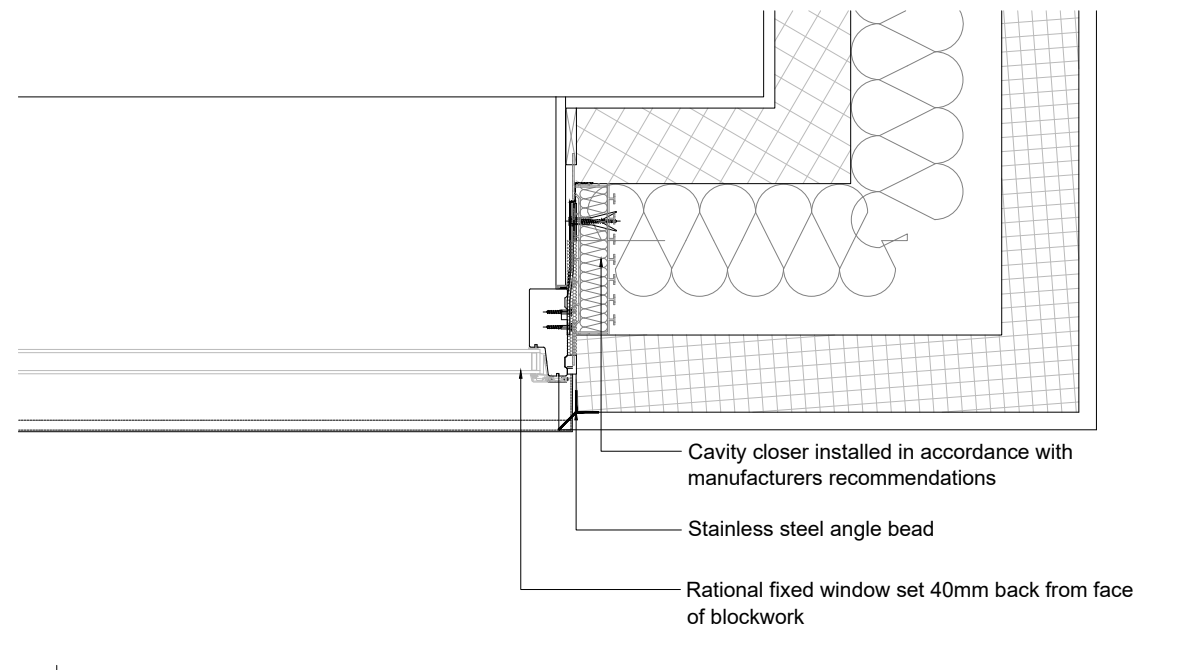
REV.	DATE	DRN.	CHK.	NOTES
A	31.05.24	CP	-	Draft Tender Issue



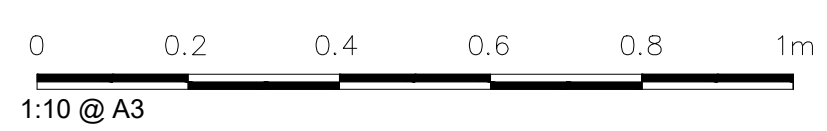
Typical Fixed window section detail
1:5 @ A3



Typical Window Elevation
1:10 @ A3



Typical plan detail
1:5 @ A3



chartered architects and planning consultants

Lee Evans Partnership LLP,
Conterbury: St Johns Lane, Conterbury, Kent CT1 2DQ Tel: 01227 784444
London: 70 Cowcross Street, London EC1M 6EJ Tel: 0203 763 1899
email: architects@lee-evans.co.uk website: www.lee-evans.co.uk fax: 01227 819102

PROJECT	CLIENT	DATE
St Luke's Maidstone : Re-ordering feasibility study	St Luke's Church, Maidstone	28/05/2024
DRAWING TITLE	DRN + CHK	SCALE
Proposed Window Details (Fixed)	CPNALE	1:10 @ A3
DRAWING NUMBER	REVISION	
08687-A-L-(27)-012	1st	